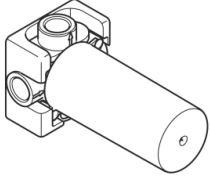


Concealed two-way diverter -

SERIES-VARIOUS

35 124 970 90 Product version up to 5/15/2020



- red brass, lead-free
- 2x female thread 1/2" connections
- 2x female thread 1/2" outlet
- cut-to-length spindle and sleeve
- dust cover
- anti-water packing
- soundproofing

Recommended miscellaneous

Leak protection 1/2" -

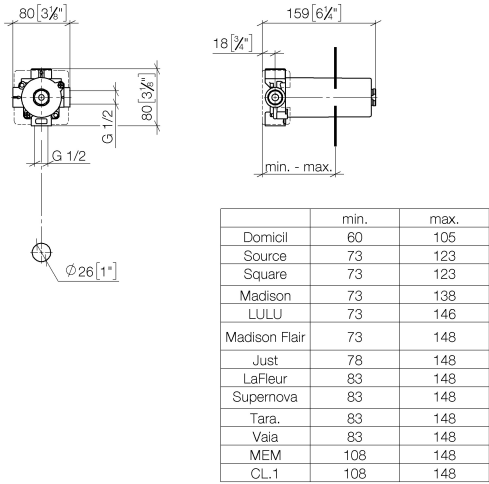
12 010 970 90



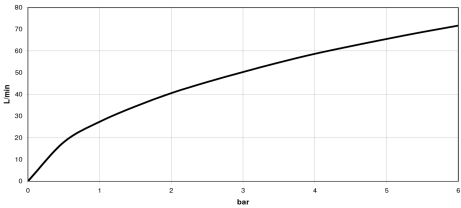
35 124 970 90

Product version up to 5/15/2020

mm [inches]



Flow rate chart



Codes & Standards

DIN 4109

ISO 3822

Ü-Zeichen



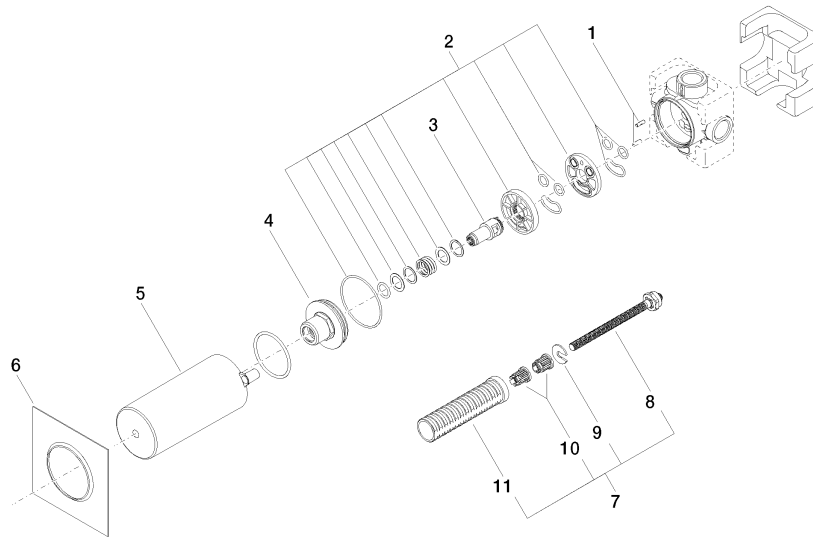
Concealed two-way diverter -

SERIES-VARIOUS

35 124 970 90 Product version up to 5/15/2020

Certificates and sustainability

LGA_28



Spare parts list

No.	Item Number	Name	Quantity used	Delivery time
	8 04 29 06 105 00 90	spindle	1.00	60
	9 09 16 01 026 90	ring	1.00	2
	6 09 14 03 109 90	seal	1.00	2
	5 09 21 02 125 90	cap	1.00	2
	2 90 30 11 085 00 90	set	1.00	2
	3 09 29 06 025 90	spindle	1.00	2
	1 09 31 11 151 90	pin	1.00	2
	4 09 21 02 124 90	lid	1.00	2
	10 90 12 12 002 00 90	fixing cap	2.00	2
	7 90 18 40 077 00 90	spindle	1.00	2
	11 90 18 40 077 01 90	spindle	1.00	2