

Wall valve 1/2" -

SERIES-VARIOUS

35 607 970 90



- red brass, lead-free
- female thread 1/2" connection
- 1x female thread 1/2" outlet
- dust cover
- anti-water packing
- soundproofing
- suitable for xGRID (when using installation track + 12 mm recess depth)
- WRAS

Recommended miscellaneous

Leak protection 1/2" -

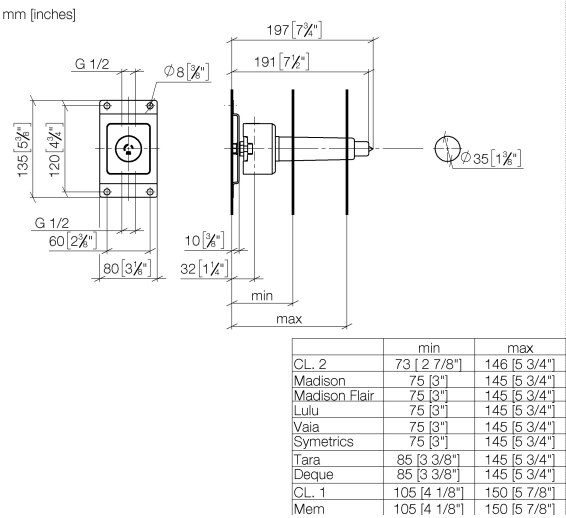
12 010 970 90



Wall valve 1/2" -

SERIES-VARIOUS

35 607 970 90



Codes & Standards

EN 200

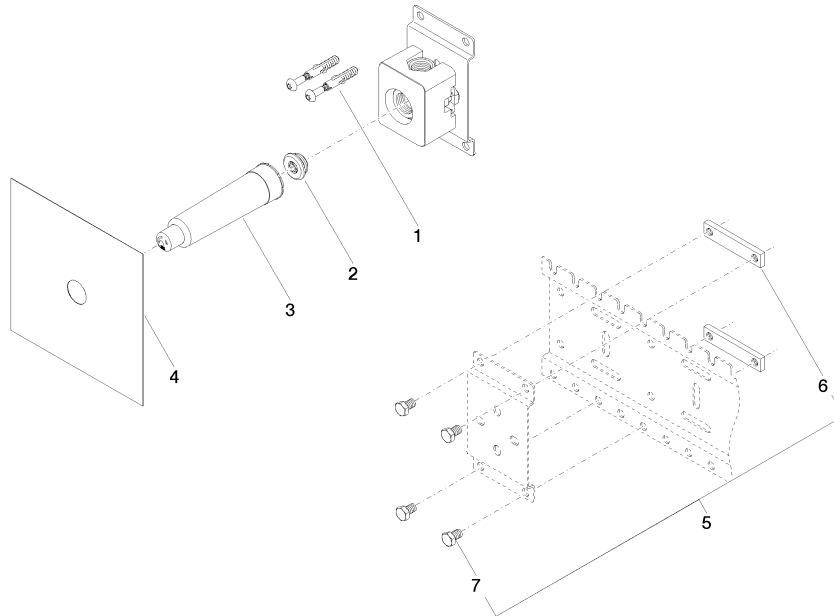
Scottish Water
Byelaws

UK Water Supply
Regulations

Certificates and sustainability

DVGW_DW-
6501DN0

WRAS_2010



Spare parts list

| No. | Item Number | Name | Quantity used | Delivery time |
|-----|--------------------|------------|---------------|---------------|
| 2 | 04 31 20 006 00 90 | plug | 1.00 | 2 |
| 1 | 04 30 31 024 01 90 | fixing set | 2.00 | 2 |
| 6 | 09 17 20 100 90 | holder | 2.00 | 60 |
| 7 | 09 30 30 152 90 | screw | 4.00 | 2 |
| 5 | 04 17 20 100 00 90 | fixing set | 1.00 | 2 |
| 3 | 09 21 02 173 90 | cap | 1.00 | 2 |
| 4 | 04 14 03 072 01 90 | gasket kit | 1.00 | 2 |