

Wall valve module with 2 valves with diverter for wall mounting -

SERIES-VARIOUS

35 696 970 90



- red brass, lead-free
- 2x female thread 1/2" connections
- 2x female thread 1/2" outlet
- 3x anti-water packing
- 3x dust cover
- soundproofing
- suitable for xGRID (when using installation track + 12 mm recess depth)

Recommended miscellaneous

Leak protection 1/2" -

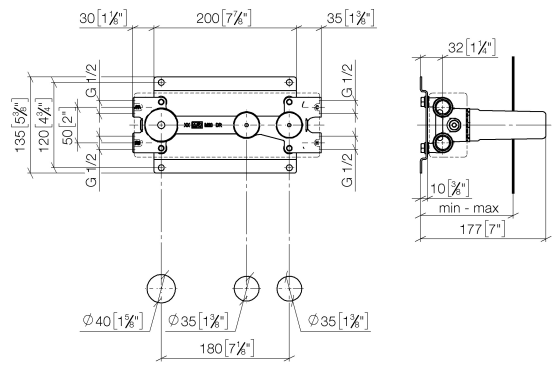
12 010 970 90

- This article is needed 4x.



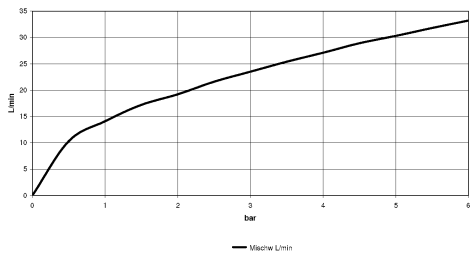
35 696 970 90

mm [inches]



	min	max
Symetrics	92 [3 5/8"]	158 [6 1/4"]

Flow rate chart



Codes & Standards

DIN 4109

ISO 3822

Ü-Zeichen

XP P 41-280



Wall valve module with 2 valves with diverter for wall mounting -

SERIES-VARIOUS

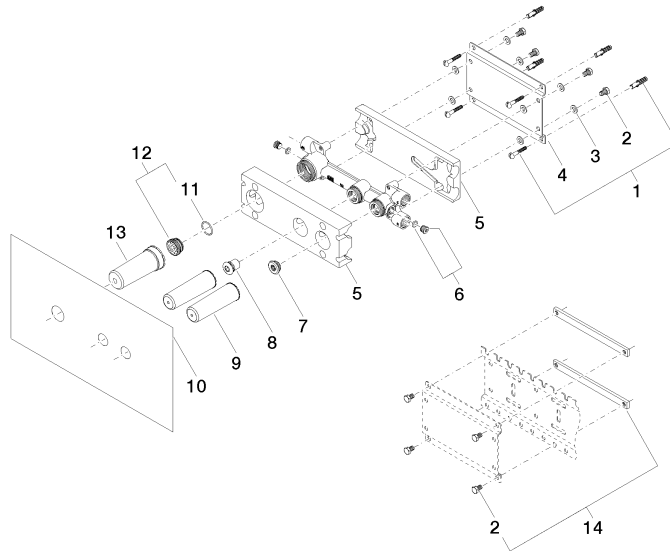
35 696 970 90

Certificates and sustainability

LGA_18

ACS_21 ACC LY

35 696 970 90



Spare parts list

No.	Item Number	Name	Quantity used	Delivery time
	2 09 30 30 152 90	screw	8.00	2
	8 04 31 20 037 00 90	plug	1.00	2
	5 09 11 11 034 90	accessories	1.00	60
	4 09 17 20 095 90	holder	1.00	60
	3 09 30 11 139 90	disc	8.00	2
	1 04 30 31 024 01 90	fixing set	2.00	2
	9 09 21 02 102 90	cap	2.00	2
	10 04 14 03 115 00 90	gasket kit	1.00	2
	13 09 21 02 136 90	cap	1.00	2
	7 04 31 20 006 00 90	plug	1.00	2
	12 04 30 11 149 00 90	plug	1.00	2
	11 09 14 10 112 90	seal	1.00	2
	14 04 17 20 101 00 90	fixing set	1.00	2
	6 04 31 20 039 11 90	plug	2.00	2