

Concealed wall-mounted mixer centred spout -

SERIES-VARIOUS

35 700 970 90

Product version from 4/1/2022



- 3x dust cover
- 2x female thread 1/2" connections
- 1x female thread 1/2" outlet
- 3x sealing plug 1/2"
- gauge 100 mm
- WRAS

Recommended miscellaneous

| | | |
|--|-------------------------------|---------------|
| | Leak protection 1/2" - | 12 010 970 90 |
| | •This article is needed 2x. | |

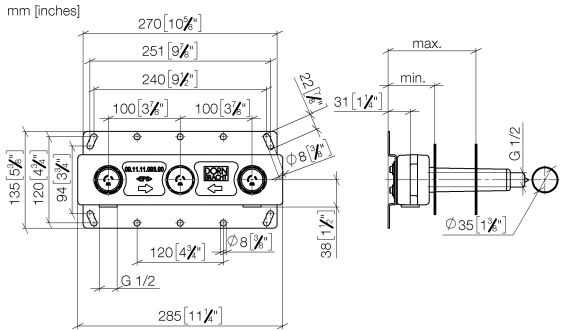
Recommended miscellaneous

| | |
|---------------------------------------------|----------------------|
| Drybox Wall-mounted basin mixer | 39 700 970 90 |
| centred spout - | |
| ●Overflow is part of the scope of delivery. | |

Concealed wall-mounted mixer centred spout -

SERIES-VARIOUS

35 700 970 90 Product version from 4/1/2022



| | | min | max |
|-----------------|---------|--------------|--------------|
| 36xxx361-FF | Madison | 85 [3 3/8"] | 145 [5 5/8"] |
| 36xxx809/819-FF | Vaia | 85 [3 3/8"] | 145 [5 5/8"] |
| 36xxx882/892-FF | Tara | 85 [3 3/8"] | 145 [5 5/8"] |
| 36xxx811-FF | CYO | 85 [3 3/8"] | 145 [5 5/8"] |
| 36xxx705-FF | CL. 1 | 110 [4 3/8"] | 150 [5 7/8"] |
| 36xxx782-FF | MEM | 110 [4 3/8"] | 150 [5 7/8"] |

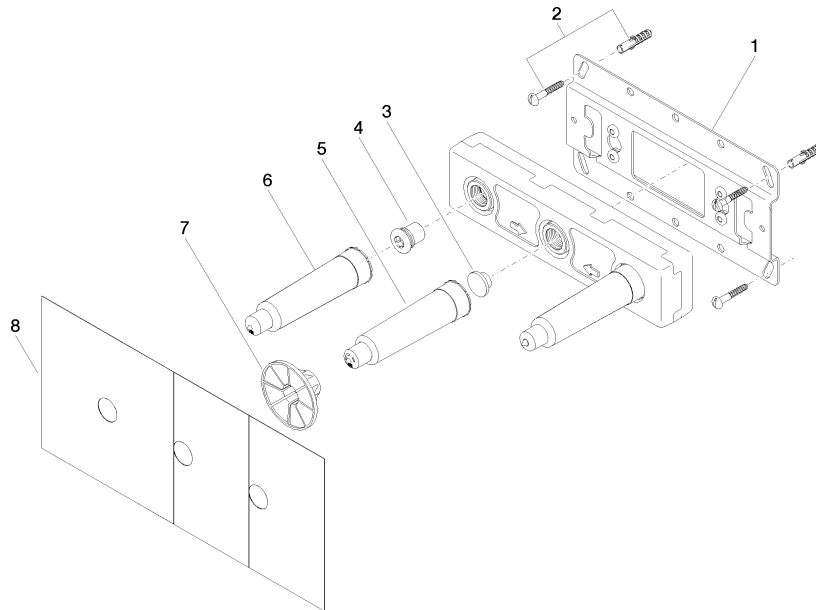
Codes & Standards

Scottish Water
Byelaws

UK Water Supply
Regulations

Certificates and sustainability

WRAS_2211



Spare parts list

| No. | Item Number | Name | Quantity used | Delivery time |
|-----|--------------------|------------|---------------|---------------|
| 6 | 04 21 02 173 01 90 | cap | 2.00 | 2 |
| 3 | 09 31 20 092 90 | plug | 1.00 | 2 |
| 2 | 04 30 31 024 01 90 | fixing set | 2.00 | 2 |
| 7 | 90 23 01 174 00 90 | sleeve | 1.00 | 2 |
| 5 | 09 21 02 173 90 | cap | 1.00 | 2 |
| 4 | 04 31 20 037 00 90 | plug | 2.00 | 2 |
| 1 | 04 17 20 251 00 90 | base | 1.00 | 60 |
| 8 | 04 14 03 072 01 90 | gasket kit | 3.00 | 2 |