


36 020 670 Product version up to 5/15/2020


- cover plate 150 x 90 mm




Required miscellaneous

| | | |
|---|--|---------------|
|  | <div> <div>Concealed single-lever mixer -</div> <div> <div>•max. recess depth 105 mm</div> <div>•min. recess depth 80 mm</div> </div> </div> | 35 020 970 90 |
|---|--|---------------|


Recommended miscellaneous

| | | |
|---|---|---------------|
|  | <div> <div>xGRID Attachment set for integrating in the dry wall construction -</div> </div> | 12 340 970 90 |
|---|---|---------------|

Required miscellaneous

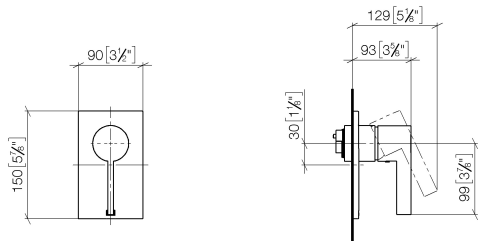
| | | |
|---|--|---------------|
|  | <div> <div>Concealed single-lever mixer with backflow preventor -</div> <div> <div>•max. recess depth 105 mm</div> <div>•min. recess depth 80 mm</div> </div> </div> | 35 021 970 90 |
|---|--|---------------|

Required miscellaneous

| | | |
|--|---|---------------|
|  | <div> <div>xGRID Installation track 555 mm -</div> </div> | 12 360 970 90 |
|--|---|---------------|

36 020 670 Product version up to 5/15/2020

mm [inches]



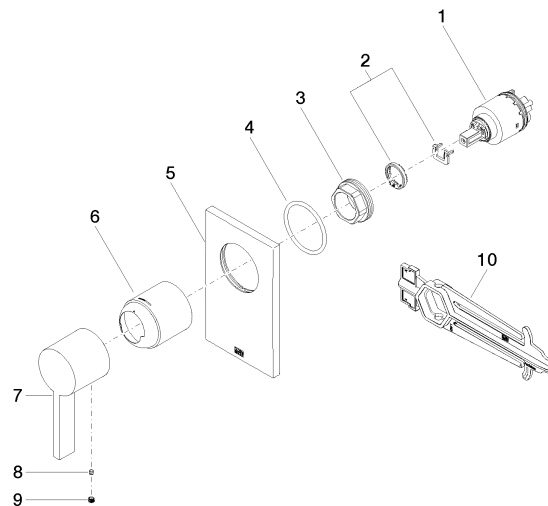
Flow rate chart



Concealed single-lever mixer without diverter - Chrome

SERIES SPECIFIC

36 020 670 Product version up to 5/15/2020



Spare parts list

| No. | Item Number | Name | Quantity used | Delivery time |
|-----|-----------------------|-------------|---------------|---------------|
| | 4 09 14 10 084 90 | seal | 1.00 | 2 |
| | 6 09 11 02 260-00 | sleeve | 1.00 | 10 |
| | 5 09 11 02 257-00 | plate | 1.00 | 10 |
| | 2 04 28 10 149 00 90 | accessories | 1.00 | 2 |
| | 1 90 15 05 038 00 90 | cartridge | 1.00 | 60 |
| | 3 09 24 04 448 90 | nut | 1.00 | 2 |
| | 8 09 31 11 099 90 | pin | 1.00 | 2 |
| | 7 09 20 67 007-00 | handle | 1.00 | 10 |
| | 10 90 30 09 064 00 90 | key | 1.00 | 2 |
| | 9 90 31 20 109 00 90 | plug | 1.00 | 2 |