

## Concealed single-lever mixer with cover plate with integrated shower connection - Brushed Dark Platinum

SERIES SPECIFIC

36 045 660 Product version up to 5/15/2020



- cover plate Ø 78 mm
- WRAS

**Intrinsic protection against back flow.**

**Article cannot be extended, please check the depth of the installation location!**

Intrinsic protection against back flow.

Article cannot be extended, please check the depth of the installation location!

### Required miscellaneous

#### **Concealed wall mounting -**

35 003 970 90

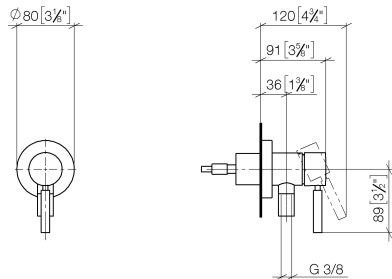


- max. recess depth 103 mm
- min. recess depth 78 mm

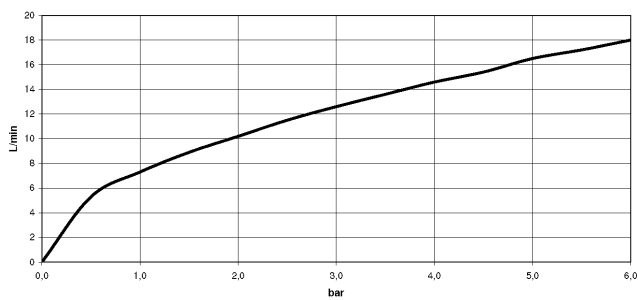
## Concealed single-lever mixer with cover plate with integrated shower connection - Brushed Dark Platinum

SERIES SPECIFIC

36 045 660 Product version up to 5/15/2020  
mm [inches]



Flow rate chart



### Codes & Standards

DIN 4109

EN 1717

ISO 3822

Scottish Water  
Byelaws

UK Water Supply  
Regulations

Ü-Zeichen



## Concealed single-lever mixer with cover plate with integrated shower connection - Brushed Dark Platinum

---

SERIES SPECIFIC

36 045 660 Product version up to 5/15/2020

Certificates and sustainability

---

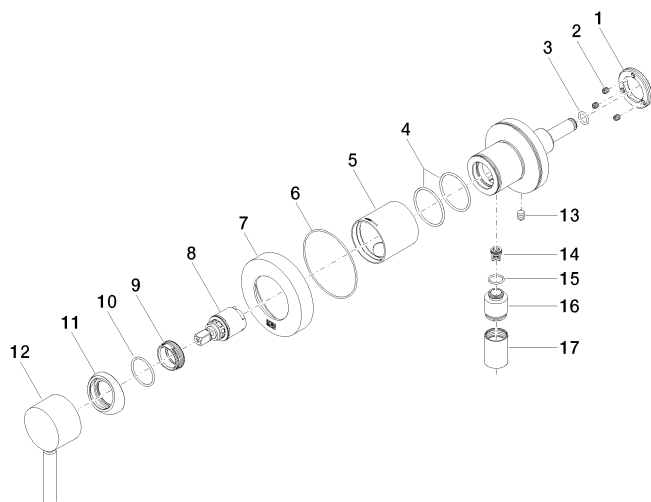
Belgaqua\_21-025-2 LGA\_29

WRAS\_2101

## Concealed single-lever mixer with cover plate with integrated shower connection - Brushed Dark Platinum

SERIES SPECIFIC

36 045 660 Product version up to 5/15/2020



### Spare parts list

| No. | Item Number        | Name                | Quantity used | Delivery time |
|-----|--------------------|---------------------|---------------|---------------|
| 11  | 09 28 30 041-99    | cover               | 1.00          | 20            |
| 13  | 09 31 11 144 90    | pin                 | 1.00          | 2             |
| 6   | 09 14 10 518 90    | seal                | 1.00          | 60            |
| 9   | 09 24 04 266 90    | nut                 | 1.00          | 2             |
| 16  | 09 24 03 281-99    | nipple              | 1.00          | 20            |
| 12  | 90 20 66 006 00-99 | handle              | 1.00          | 20            |
| 5   | 09 18 40 215-99    | sleeve              | 1.00          | 20            |
| 15  | 09 14 10 213 90    | seal                | 1.00          | 2             |
| 4   | 09 14 10 111 90    | seal                | 2.00          | 2             |
| 10  | 09 14 10 120 90    | seal                | 1.00          | 2             |
| 8   | 90 15 05 044 00 90 | cartridge           | 1.00          | 2             |
| 14  | 09 23 01 131 90    | back-flow preventer | 1.00          | 2             |
| 1   | 09 24 77 002 90    | nut                 | 1.00          | 2             |
| 7   | 09 27 66 000-99    | rosette             | 1.00          | 20            |
| 3   | 09 14 10 139 90    | seal                | 1.00          | 2             |
| 17  | 90 21 02 069 00-99 | cover               | 1.00          | 20            |
| 2   | 90 31 11 030 00 90 | pin                 | 3.00          | 2             |