

Concealed single-lever mixer with cover plate with integrated shower connection - Brushed Platinum

SERIES SPECIFIC

36 046 970 Product version from 4/1/2024



- cover plate 80 x 80 mm
- Intrinsic protection against back flow.**

Intrinsic protection against back flow.

| | | |
|---|-------------------------------------|---------------|
|  | Brushed Platinum | 36 046 970-06 |
|  | Chrome | 36 046 970-00 |
|  | Platinum | 36 046 970-08 |
|  | Dark Chrome | 36 046 970-19 |
|  | Brushed Light Gold | 36 046 970-27 |
|  | Brushed Durabrass (23kt Gold) | 36 046 970-28 |
|  | Matte Black | 36 046 970-33 |
|  | Brushed Champagne (22kt Gold) | 36 046 970-46 |
|  | Champagne (22kt Gold) | 36 046 970-47 |
|  | Brushed Chrome | 36 046 970-93 |
|  | Brushed Dark Platinum | 36 046 970-99 |

Required miscellaneous



Concealed wall mounting -

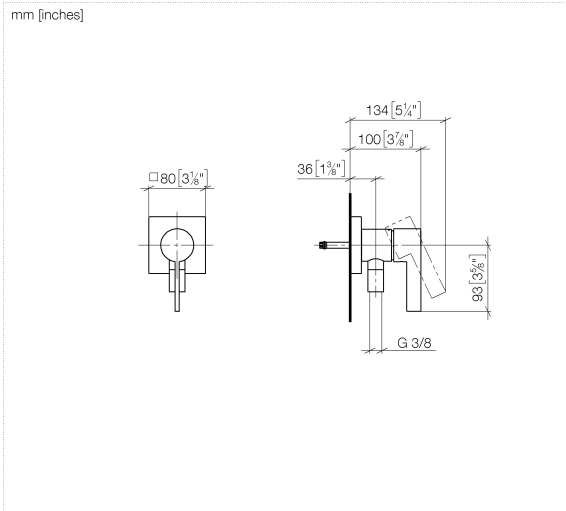
- min. recess depth 80 mm
- max. recess depth 105 mm

35 050 970 90

Concealed single-lever mixer with cover plate with integrated shower connection - Brushed Platinum

SERIES SPECIFIC

36 046 970 Product version from 4/1/2024



Flow rate chart



Codes & Standards

DIN 4109

ISO 3822

Ü-Zeichen



Concealed single-lever mixer with cover plate with integrated shower connection - Brushed Platinum

SERIES SPECIFIC

36 046 970 Product version from 4/1/2024

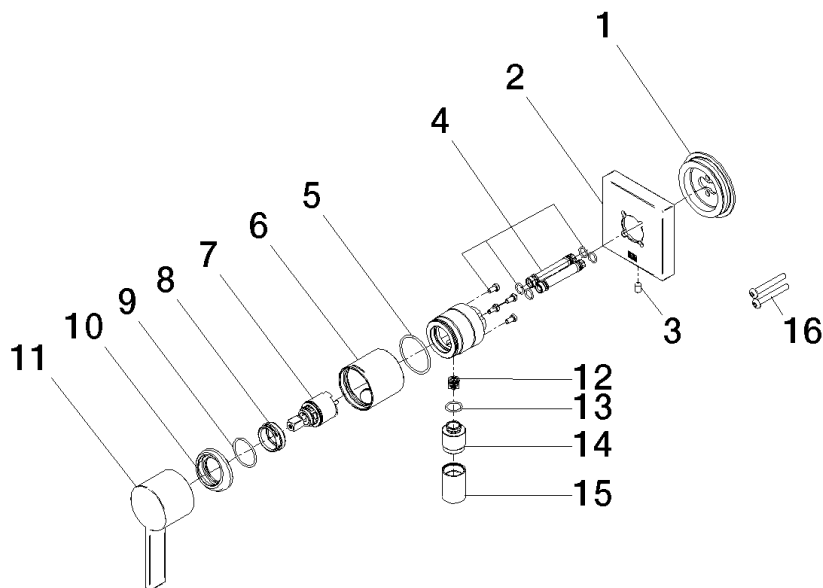
Certificates and sustainability

LGA_38

Concealed single-lever mixer with cover plate with integrated shower connection - Brushed Platinum

SERIES SPECIFIC

36 046 970 Product version from 4/1/2024



Spare parts list

| No. | Item Number | Name | Quantity used | Delivery time |
|--|-----------------------|---------------------|---------------|---------------|
| | 10 09 28 30 041-06 | cover | 1.00 | 10 |
| | 12 09 23 01 131 90 | back-flow preventer | 1.00 | 2 |
| | 13 90 14 10 021 00 90 | seal | 1.00 | 2 |
| | 15 90 21 02 069 00-06 | cover | 1.00 | 10 |
| | 14 09 24 03 281-06 | nipple | 1.00 | 10 |
| | 7 90 15 05 044 00 90 | cartridge | 1.00 | 2 |
| | 2 90 27 97 046 00-06 | rosette | 1.00 | 10 |
| | 5 09 14 10 111 90 | seal | 1.00 | 2 |
| | 1 90 30 11 232 00 90 | disc | 1.00 | 2 |
| | 16 90 30 30 229 00 90 | screw | 2.00 | 2 |
| | 3 09 31 11 144 90 | pin | 1.00 | 2 |
| | 6 90 18 40 320 00-06 | sleeve | 1.00 | - |
| Spare part can no longer be ordered, please order the replacement item | | | | |
| | 4 90 24 01 046 00 90 | connection | 2.00 | 2 |
| | 8 09 24 04 266 90 | nut | 1.00 | 2 |
| | 9 09 14 10 120 90 | seal | 1.00 | 2 |
| | 11 09 20 97 063-00 | handle | 1.00 | 10 |