

Concealed single-lever mixer with cover plate - Matte Black

SERIES SPECIFIC

36 060 660 Product version up to 6/29/2020



- cover plate Ø 78 mm
- WRAS

| | | |
|---|-------------------------------------|---------------|
|  | Matte Black | 36 060 660-33 |
|  | Chrome | 36 060 660-00 |
|  | Brushed Platinum | 36 060 660-06 |
|  | Platinum | 36 060 660-08 |
|  | Dark Chrome | 36 060 660-19 |
|  | Light Gold | 36 060 660-26 |
|  | Brushed Light Gold | 36 060 660-27 |
|  | Brushed Durabronze (23kt Gold) | 36 060 660-28 |
|  | Brushed Dark Brass | 36 060 660-39 |
|  | Brushed Bronze | 36 060 660-42 |
|  | Brushed Champagne (22kt Gold) | 36 060 660-46 |
|  | Champagne (22kt Gold) | 36 060 660-47 |
|  | Brushed Chrome | 36 060 660-93 |
|  | Brushed Dark Platinum | 36 060 660-99 |

Required miscellaneous



Concealed wall-mounted single-lever mixer - 35 860 970 90

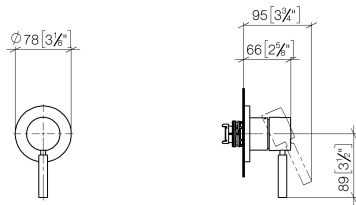
- max. recess depth 95 mm
- min. recess depth 80 mm

Concealed single-lever mixer with cover plate - Matte Black

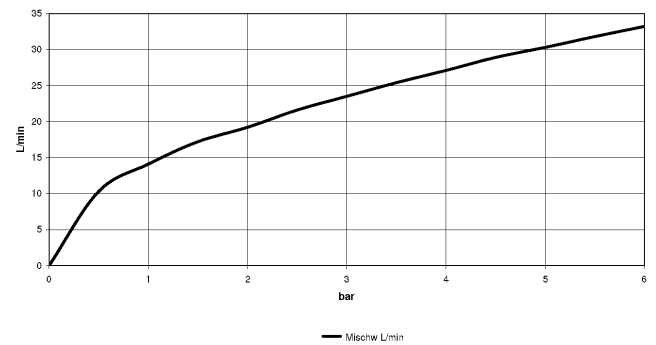
SERIES SPECIFIC

36 060 660 Product version up to 6/29/2020

mm [inches]



Flow rate chart



Codes & Standards

DIN 4109

ISO 3822

Scottish Water
Byelaws

UK Water Supply
Regulations

Ü-Zeichen



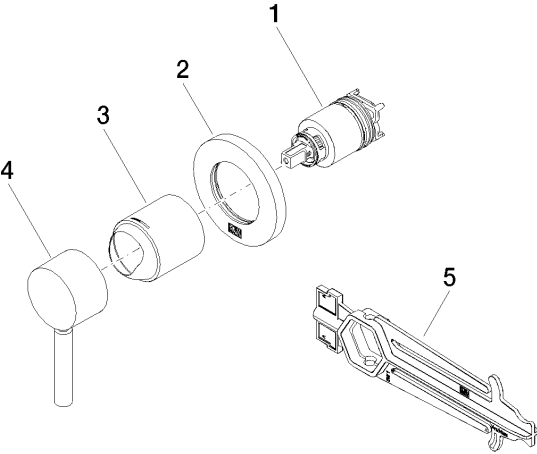
Concealed single-lever mixer with cover plate - Matte Black

SERIES SPECIFIC

36 060 660 Product version up to 6/29/2020

Certificates and sustainability

WRAS_2107 LGA_29



Spare parts list

| No. | Item Number | Name | Quantity used | Delivery time |
|-----|--------------------|-----------|---------------|---------------|
| 2 | 90 27 66 009 00-33 | rosette | 1.00 | 30 |
| 3 | 09 11 02 293-33 | cover | 1.00 | 60 |
| 4 | 90 20 66 006 00-33 | handle | 1.00 | 30 |
| 1 | 90 15 05 064 01 90 | cartridge | 1.00 | 2 |
| 5 | 90 30 09 064 00 90 | key | 1.00 | 2 |