

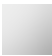




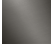
MADISON Concealed two-way diverter - Chrome

MADISON

36 200 361 Product version from 4/1/2022



- rotary diverter
- rosette Ø 60 mm
- NEUTRAL porcelain insert
- WRAS

| | | |
|---|-------------------------------|---------------|
|  | Chrome | 36 200 361-00 |
|  | Brushed Platinum | 36 200 361-06 |
|  | Platinum | 36 200 361-08 |
|  | Durabrass (23kt Gold) | 36 200 361-09 |
|  | Brushed Durabrass (23kt Gold) | 36 200 361-28 |
|  | Brushed Dark Platinum | 36 200 361-99 |

Required miscellaneous



- Concealed two-way diverter -** 35 202 970 90
- min. recess depth 85 mm
 - max. recess depth 155 mm

mm [inches]



Flow rate chart



Codes & Standards

DIN 4109

ISO 3822

Scottish Water
Byelaws

UK Water Supply
Regulations

Ü-Zeichen



MADISON Concealed two-way diverter - Chrome

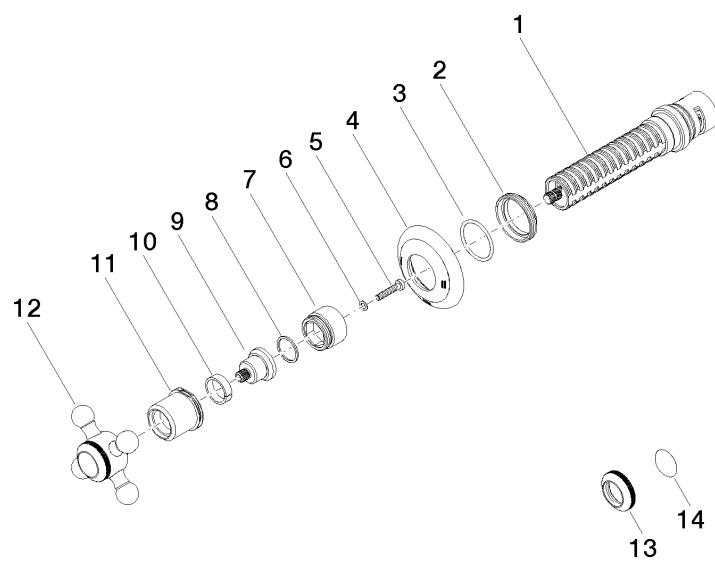
MADISON

36 200 361 Product version from 4/1/2022

Certificates and sustainability

LGA_38

WRAS_2307



Spare parts list

| No. | Item Number | Name | Quantity used | Delivery time |
|-----|--------------------|-------------|---------------|---------------|
| 11 | 09 21 02 161-00 | cover | 1.00 | 10 |
| 4 | 09 27 36 105-00 | rosette | 1.00 | 10 |
| 1 | 90 90 03 304 10 90 | diverter | 1.00 | 2 |
| 9 | 09 12 12 064-00 | base | 1.00 | 10 |
| 7 | 09 18 30 007-00 | sleeve | 1.00 | 10 |
| 2 | 09 23 10 125-00 | nut | 1.00 | 10 |
| 12 | 04 20 36 100 02-00 | handle | 1.00 | 10 |
| 13 | 09 20 36 005-00 | handle | 1.00 | 10 |
| 14 | 09 26 01 016 90 | accessories | 1.00 | 2 |
| 6 | 09 30 11 194 90 | disc | 1.00 | 2 |
| 10 | 90 14 15 021 00 90 | ring | 1.00 | 2 |
| 5 | 90 30 30 075 00 90 | screw | 1.00 | 2 |
| 3 | 90 14 10 063 00 90 | seal | 1.00 | 2 |
| 8 | 90 28 10 030 00 90 | ring | 1.00 | 2 |