

Concealed two-way diverter - Champagne (22kt Gold)

SERIES SPECIFIC

36 200 740 Product version from 4/1/2022



- rotary diverter
- without rosette
- handle Ø 60mm
- WRAS

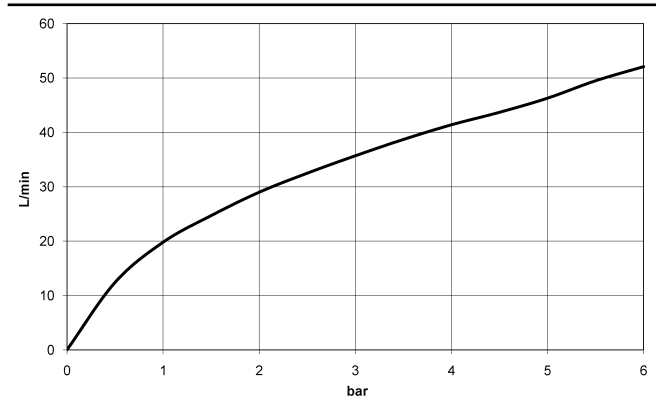
	Champagne (22kt Gold)	36 200 740-47
	Chrome	36 200 740-00
	Brushed Platinum	36 200 740-06
	Light Gold	36 200 740-26
	Brushed Light Gold	36 200 740-27
	Brushed Durabronze (23kt Gold)	36 200 740-28
	Matte Black	36 200 740-33
	Brushed Dark Brass	36 200 740-39
	Brushed Bronze	36 200 740-42
	Brushed Champagne (22kt Gold)	36 200 740-46
	Brushed Dark Platinum	36 200 740-99

36 200 740 Product version from 4/1/2022

mm [inches]



Flow rate chart



Codes & Standards

DIN 4109	ISO 3822	Scottish Water Byelaws	UK Water Supply Regulations
----------	----------	---------------------------	--------------------------------

Ü-Zeichen



Concealed two-way diverter - Champagne (22kt Gold)

SERIES SPECIFIC

36 200 740 Product version from 4/1/2022

Certificates and sustainability

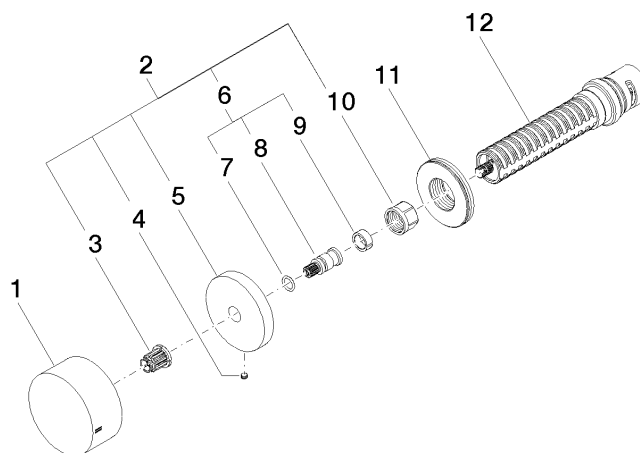
LGA_38 WRAS_2307

Concealed two-way diverter - Champagne (22kt Gold)

SERIES SPECIFIC

36 200 740 Product version from 4/1/2022

Parts for other
finishes can be found
here: [Chrome](#)



Spare parts list

No.	Item Number	Name	Quantity used	Delivery time
1	09 20 74 044-47	handle	1.00	60
4	09 31 11 055 90	pin	1.00	2
5	09 27 74 004-47	rosette	1.00	60
6	04 29 06 020 00-00	spindle	1.00	10
12	90 90 03 304 10 90	diverter	1.00	2
3	90 12 12 002 00 90	fixing cap	1.00	2
8	09 29 06 020-47	spindle	1.00	-
Spare part can no longer be ordered, please order the replacement item				
2	04 27 74 004 00-47	rosette	1.00	60
11	09 30 01 107 90	sleeve	1.00	2
9	90 14 15 020 03 90	ring	1.00	2
7	90 14 10 060 00 90	seal	1.00	2
10	90 23 30 023 00 90	nut	1.00	2