

SYMETRICS Concealed two-way diverter - Brushed Dark Platinum

36 200 985

Product version from 4/1/2022



- rotary diverter
  - rosette 60 x 60 mm
  - WRAS

	Brushed Dark Platinum	36 200 985-99
	Chrome	36 200 985-00
	brushed chrome	36 200 985-93
	Brushed Platinum	36 200 985-06
	Dark Chrome	36 200 985-19
	Brushed Light Gold	36 200 985-27
	Brushed Durabrass (23kt Gold)	36 200 985-28
	Matte Black	36 200 985-33
	Brushed Champagne (22kt Gold)	36 200 985-46
	Champagne (22kt Gold)	36 200 985-47

Required miscellaneous



- Concealed two-way diverter -

•max. recess depth mm

•min. recess depth mm

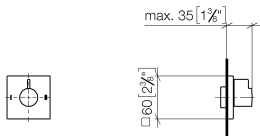
35 202 970 90

SYMETRICS Concealed two-way diverter - Brushed Dark Platinum

36 200 985

Product version from 4/1/2022

mm [inches]



Flow rate chart



Codes & Standards

DIN 4109	ISO 3822	Scottish Water Byelaws	UK Water Supply Regulations
----------	----------	------------------------	-----------------------------

Ü-Zeichen



## SYMETRICS Concealed two-way diverter - Brushed Dark Platinum

---

36 200 985 Product version from 4/1/2022

### Certificates

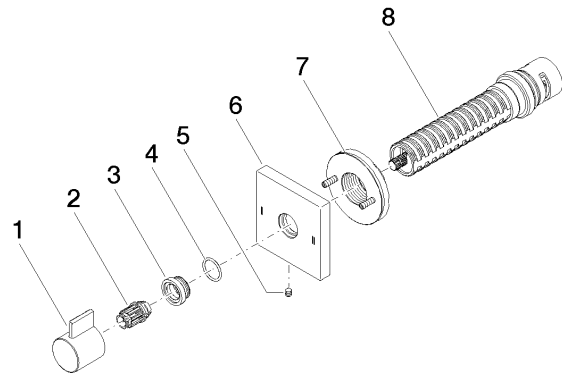
---

LGA\_38

WRAS\_2307

**SYMETRICS Concealed two-way diverter - Brushed Dark Platinum**

36 200 985    Product version from 4/1/2022



**Spare parts list**

No.	Item Number	Name	Quantity used	Delivery time
1	09 20 98 002-99	handle	1	20
2	09 12 12 005 90	fixing cap	1	2
3	09 12 12 043-99	base	1	20
4	09 14 10 017 90	seal	1	2
5	09 31 11 294 90	pin	1	2
6	09 27 98 037-99	rosette	1	20
7	90 21 02 181 00 90	disc	1	2
8	90 90 03 304 10 90	diverter	1	2