



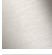



CL.1 Concealed two-way diverter - Dark Chrome

CL.1

36 201 705    Product version from 4/1/2022



- rotary diverter
- rosette 60 x 60 mm
- WRAS

	Dark Chrome	36 201 705-19
	Chrome	36 201 705-00
	Brushed Platinum	36 201 705-06
	Brushed Champagne (22kt Gold)	36 201 705-46
	Champagne (22kt Gold)	36 201 705-47
	Brushed Dark Platinum	36 201 705-99

## CL.1 Concealed two-way diverter - Dark Chrome

CL.1

36 201 705 Product version from 4/1/2022

mm [inches]



Flow rate chart



### Codes & Standards

DIN 4109

ISO 3822

Scottish Water  
Byelaws

UK Water Supply  
Regulations

Ü-Zeichen



## CL.1 Concealed two-way diverter - Dark Chrome

---

CL.1

36 201 705 Product version from 4/1/2022

### Certificates and sustainability

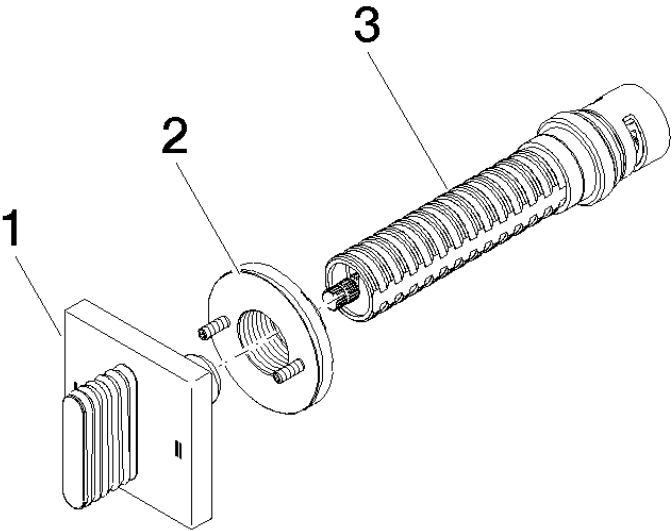
---

LGA\_38

WRAS\_2307

36 201 705    Product version from 4/1/2022

Parts for other  
finishes can be found  
here: [Chrome](#)



Spare parts list

No.	Item Number	Name	Quantity used	Delivery time
1	90 20 70 055 08-19	handle	1.00	20
2	90 21 02 181 00 90	disc	1.00	2
3	90 90 03 304 10 90	diverter	1.00	2