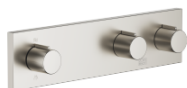


SYMETRICS Wall valve with 2 valves with diverter for wall mounting - Brushed Platinum

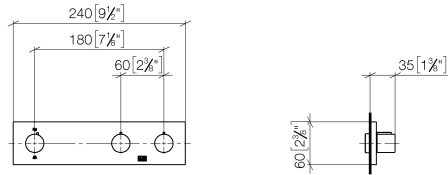
SYMETRICS

36 337 980

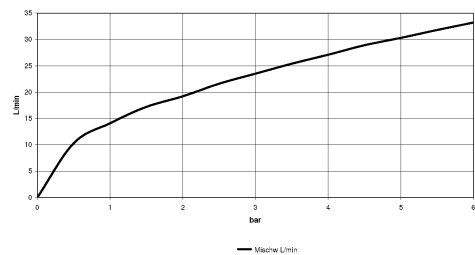
- cover plate 240 x 60 mm



36 337 980
mm [inches]



Flow rate chart



Codes & Standards

DIN 4109 ISO 3822 Ü-Zeichen



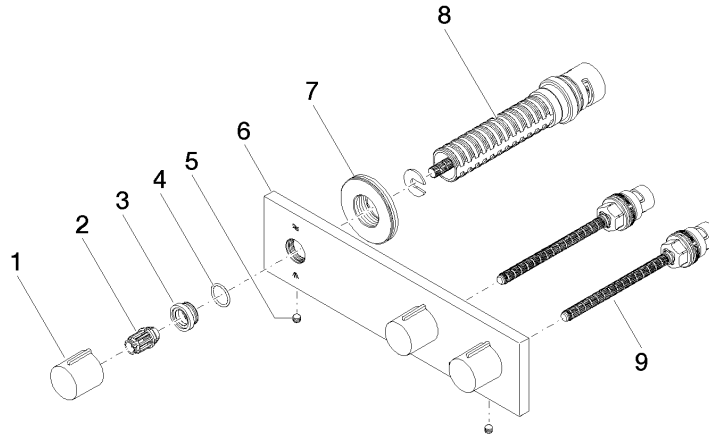
SYMETRICS Wall valve with 2 valves with diverter for wall mounting - Brushed Platinum

SYMETRICS

36 337 980

Certificates and sustainability

LGA_18



Spare parts list

No.	Item Number	Name	Quantity used	Delivery time
3	09 12 12 043-06	base	3.00	10
7	09 30 01 107 90	sleeve	1.00	2
1	09 20 98 001-06	handle	3.00	10
8	90 90 03 159 00 90	diverter	1.00	2
6	09 27 98 023-06	plate	1.00	10
2	09 12 12 005 90	fixing cap	3.00	2
9	90 90 03 202 00 90	top	2.00	2
4	09 14 10 017 90	seal	3.00	2
5	90 31 11 112 00 90	pin	2.00	2