

xTOOL Concealed thermostat without volume control 1/2" - Matte Black

META

36 501 979



- cover plate Ø 124 mm
- temperature control handle with safety limit stop at 38°C
- thermostat cartridge

| | | |
|---|-------------------------------|---------------|
|  | Matte Black | 36 501 979-33 |
|  | Chrome | 36 501 979-00 |
|  | Brushed Platinum | 36 501 979-06 |
|  | Platinum | 36 501 979-08 |
|  | Durabrand (23kt Gold) | 36 501 979-09 |
|  | Dark Chrome | 36 501 979-19 |
|  | Light Gold | 36 501 979-26 |
|  | Brushed Light Gold | 36 501 979-27 |
|  | Brushed Durabrand (23kt Gold) | 36 501 979-28 |
|  | Brushed Bronze | 36 501 979-42 |
|  | Brushed Champagne (22kt Gold) | 36 501 979-46 |
|  | Champagne (22kt Gold) | 36 501 979-47 |
|  | Brushed Chrome | 36 501 979-93 |
|  | Brushed Dark Platinum | 36 501 979-99 |

Required miscellaneous



xTOOL Concealed thermostat module without volume control - 35 503 970 90
 • max. recess depth 110 mm
 • min. recess depth 85 mm

Recommended miscellaneous



xGRID Attachment set for integrating in the dry wall construction - 12 340 970 90

Required miscellaneous



xGRID Installation track 555 mm - 12 360 970 90

36 501 979

mm [inches]



Certificates

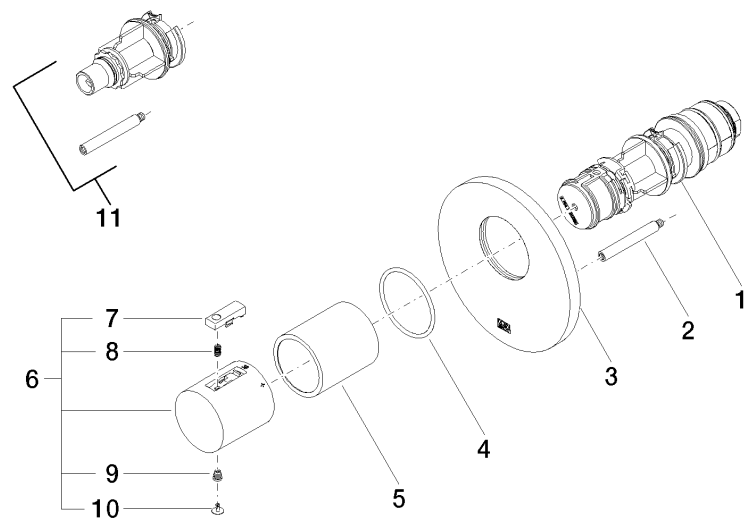
WRAS_2011026.

DVGW_DW-
6512DN0706.

LGA_29930.

LGA_29932.

36 501 979



Spare parts list

| No. | Item Number | Name | Quantity used | Delivery time |
|-----|--------------------|-------------------|---------------|---------------|
| 1 | 90 15 02 063 00 90 | cartridge | 1 | 2 |
| 2 | 90 31 09 095 00 90 | bar | 1 | 2 |
| 3 | 09 11 02 162-33 | cover | 1 | 60 |
| 4 | 90 14 10 049 00 90 | seal | 1 | 2 |
| 5 | 90 21 02 112 00-33 | sleeve | 1 | 30 |
| 6 | 90 17 33 004 00-33 | handle | 1 | 30 |
| 7 | 90 21 33 011 00-13 | handle | 1 | 2 |
| 8 | 90 16 02 027 00 90 | spring | 1 | 2 |
| 9 | 90 30 30 136 00 90 | screw | 1 | 2 |
| 10 | 90 31 20 049 00-13 | plug | 1 | 30 |
| 11 | 12 178 970 90 | Extension 46 mm - | 1 | 2 |