

xTOOL Concealed thermostat without volume control 3/4" - Brushed Durabrand (23kt Gold) SERIES SPECIFIC

36 503 780 Product version up to 1/1/2022



- cover plate 120 x 120 mm
- temperature control handle with safety limit stop at 38°C
- thermostat cartridge
- WRAS

	Brushed Durabrand (23kt Gold)	36 503 780-28
	Chrome	36 503 780-00
	Brushed Platinum	36 503 780-06
	Platinum	36 503 780-08
	Dark Chrome	36 503 780-19
	Brushed Light Gold	36 503 780-27
	Matte Black	36 503 780-33
	Brushed Champagne (22kt Gold)	36 503 780-46
	Champagne (22kt Gold)	36 503 780-47
	Brushed Chrome	36 503 780-93
	Brushed Dark Platinum	36 503 780-99

Required miscellaneous



xTOOL Concealed thermostat module without volume control - 35 503 970 90
 •max. recess depth 155 mm
 •min. recess depth 115 mm

Recommended miscellaneous



xGRID Attachment set for integrating in the dry wall construction - 12 340 970 90

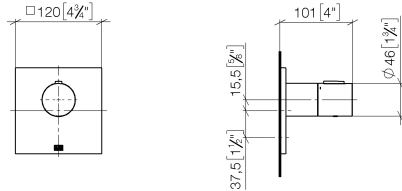
Required miscellaneous



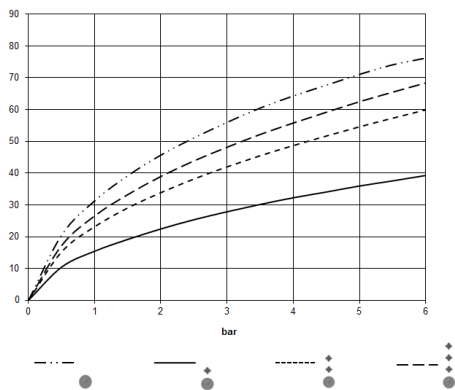
xGRID Installation track 555 mm - 12 360 970 90

xTOOL Concealed thermostat without volume control 3/4" - Brushed Durabross SERIES SPECIFIC (23kt Gold)

36 503 780 Product version up to 1/1/2022
mm [inches]



Flow rate chart



Codes & Standards

DIN 4109

EN 1111

ISO 3822

Scottish Water
Byelaws

UK Water Supply
Regulations

Ü-Zeichen



xTOOL Concealed thermostat without volume control 3/4" - Brushed Durabross SERIES SPECIFIC
(23kt Gold)

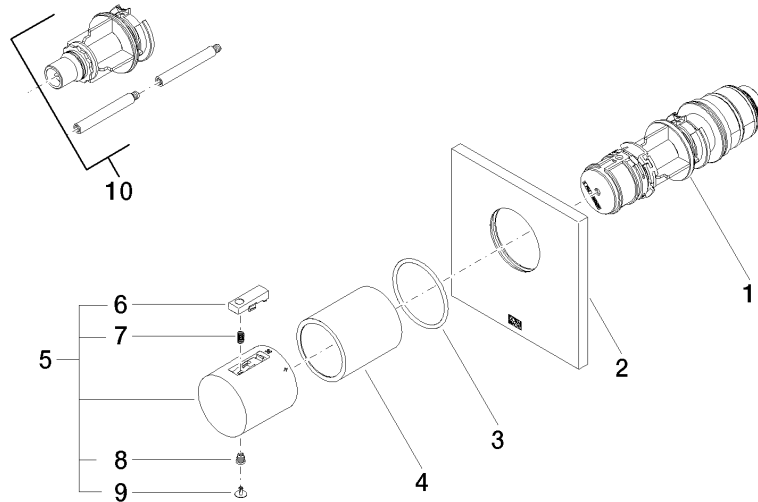
36 503 780 Product version up to 1/1/2022

Certificates and sustainability

WRAS_2011	DVGW_DW- 6512DN0	LGA_29	LGA_29
-----------	---------------------	--------	--------

xTOOL Concealed thermostat without volume control 3/4" - Brushed Durabross SERIES SPECIFIC (23kt Gold)

36 503 780 Product version up to 1/1/2022



Spare parts list

No.	Item Number	Name	Quantity used	Delivery time
7	90 16 02 027 00 90	spring	1.00	2
2	09 11 02 196-28	cover	1.00	60
10	12 178 970 90	Extension 46 mm -	1.00	2
5	90 17 33 004 00-28	handle	1.00	20
8	90 30 30 136 00 90	screw	1.00	2
9	90 31 20 049 00-13	plug	1.00	30
3	90 14 10 049 00 90	seal	1.00	2
4	90 21 02 112 00-28	sleeve	1.00	20
6	90 21 33 011 00-13	handle	1.00	2
1	90 15 02 063 00 90	cartridge	1.00	2