

xTOOL Concealed thermostat without volume control 3/4" - Brushed Platinum

SERIES SPECIFIC

36 503 985

Product version up to 1/1/2022



- cover plate 120 x 120 mm
- temperature control handle with safety limit stop at 38°C
- thermostat cartridge
- WRAS

| | | |
|---|-------------------------------|---------------|
|  | Brushed Platinum | 36 503 985-06 |
|  | Chrome | 36 503 985-00 |
|  | Platinum | 36 503 985-08 |
|  | Dark Chrome | 36 503 985-19 |
|  | Brushed Light Gold | 36 503 985-27 |
|  | Brushed Durabrass (23kt Gold) | 36 503 985-28 |
|  | Matte Black | 36 503 985-33 |
|  | Brushed Champagne (22kt Gold) | 36 503 985-46 |
|  | Champagne (22kt Gold) | 36 503 985-47 |
|  | Brushed Chrome | 36 503 985-93 |
|  | Brushed Dark Platinum | 36 503 985-99 |

Required miscellaneous



xTOOL Concealed thermostat module without volume control -

35 503 970 90

•max. recess depth 160 mm

•min. recess depth 95 mm

Required miscellaneous



xGRID Installation track 555 mm -

12 360 970 90

Recommended miscellaneous



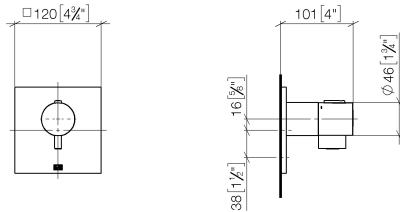
xGRID Attachment set for integrating in the dry wall construction -

12 340 970 90

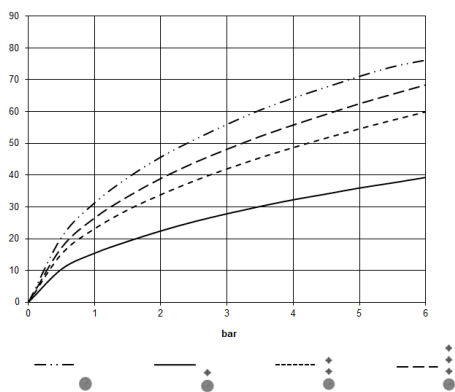
xTOOL Concealed thermostat without volume control 3/4" - Brushed Platinum SERIES SPECIFIC

36 503 985 Product version up to 1/1/2022

mm [inches]



Flow rate chart



Codes & Standards

DIN 4109

EN 1111

ISO 3822

Scottish Water
Byelaws

UK Water Supply
Regulations

Ü-Zeichen



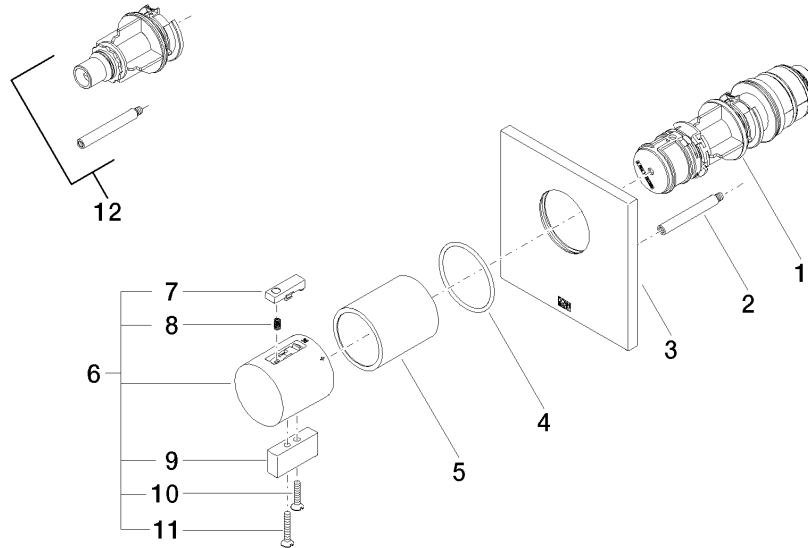
xTOOL Concealed thermostat without volume control 3/4" - Brushed Platinum

SERIES SPECIFIC

36 503 985 Product version up to 1/1/2022

Certificates and sustainability

| | | | |
|-----------|-----------------|--------|--------|
| WRAS_2011 | DVGW_DW-6512DN0 | LGA_29 | LGA_29 |
|-----------|-----------------|--------|--------|



Spare parts list

| No. | Item Number | Name | Quantity used | Delivery time |
|-----|--------------------|-------------------|---------------|---------------|
| 6 | 04 17 33 006 00-06 | handle | 1.00 | 60 |
| 11 | 09 30 30 160-06 | screw | 2.00 | 10 |
| 3 | 09 11 02 196-06 | cover | 1.00 | 60 |
| 10 | 09 30 30 159-06 | screw | 1.00 | 10 |
| 12 | 12 178 970 90 | Extension 46 mm - | 1.00 | 2 |
| 8 | 90 16 02 027 00 90 | spring | 1.00 | 2 |
| 9 | 09 20 33 006-06 | handle | 1.00 | 10 |
| 4 | 90 14 10 049 00 90 | seal | 1.00 | 2 |
| 2 | 90 31 09 095 00 90 | bar | 1.00 | 2 |
| 5 | 90 21 02 112 00-06 | sleeve | 1.00 | 10 |
| 7 | 90 21 33 011 00-13 | handle | 1.00 | 2 |
| 1 | 90 15 02 063 00 90 | cartridge | 1.00 | 2 |