

WATER POINTS Concealed body spray FlowReduce - Chrome

IMO

36 515 979



- HORIZONTAL RAIN, max. flow rate 6 l/min (at 3 bar)
 - with anti-scale system
 - cover plate 120 x 120 mm
 - This product can help a building meet the requirements of Green Building Rating Systems, e.g. LEED®, BREEAM®, DGNB
- Flow restrictor (8.3 l/min) to extend shower jet from approx. 500 mm to approx. 1000 mm**

Flow restrictor (8.3 l/min) to extend shower jet from approx. 500 mm to approx. 1000 mm

Fits: IMO, LULU, MADISON, MEM, TARA, CL.1, LISSÉ, VAIA, META, CYO

| | | |
|--|--------------------------------|---------------|
| | Chrome | 36 515 979-00 |
| | Brushed Platinum | 36 515 979-06 |
| | Platinum | 36 515 979-08 |
| | Dark Chrome | 36 515 979-19 |
| | Light Gold | 36 515 979-26 |
| | Brushed Light Gold | 36 515 979-27 |
| | Brushed Durabronze (23kt Gold) | 36 515 979-28 |
| | Matte Black | 36 515 979-33 |
| | Brushed Bronze | 36 515 979-42 |
| | Brushed Champagne (22kt Gold) | 36 515 979-46 |
| | Champagne (22kt Gold) | 36 515 979-47 |
| | Brushed Chrome | 36 515 979-93 |
| | Brushed Dark Platinum | 36 515 979-99 |

Required miscellaneous



- WATER POINTS Adapter plate -** 12 305 970 90
- adapter plate for mounting concealed rough parts 35 205 970 90 on the xGRID installation track.

Required miscellaneous



- Concealed wall installation box -** 35 205 970 90
- max. recess depth 110 mm
 - min. recess depth 85 mm

Recommended miscellaneous



- xGRID Attachment set for integrating in the dry wall construction -** 12 340 970 90

Required miscellaneous



- xGRID Installation track 555 mm -** 12 360 970 90

36 515 979

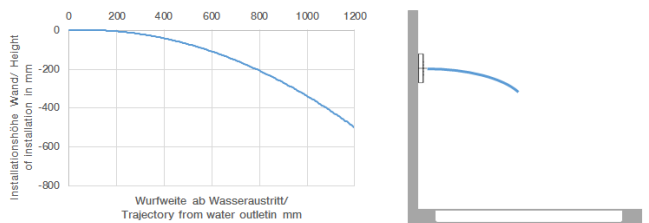
mm [inches]



Flow rate chart



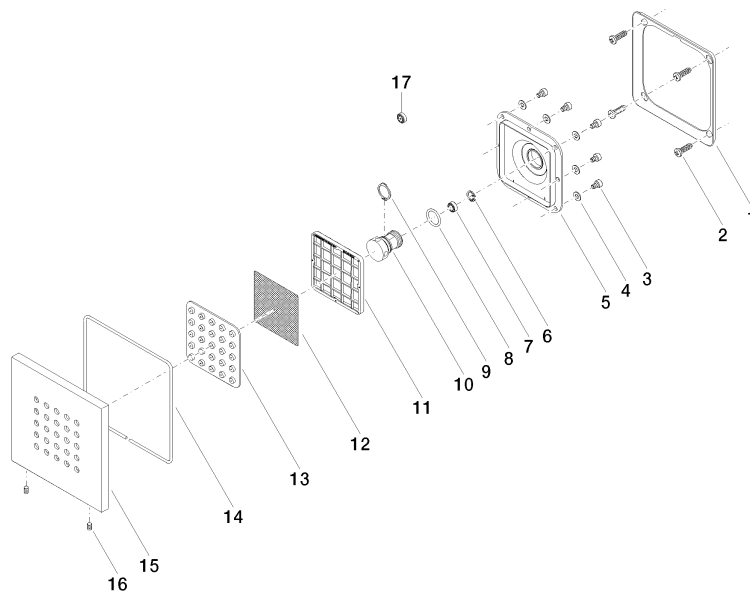
Trajectory diagram



Certificates

IAPMO_4976 (5). LGA_18896. WRAS_1304001.

36 515 979



Spare parts list

| No. | Item Number | Name | Quantity used | Delivery time |
|-----|--------------------|--------------|---------------|---------------|
| 1 | 09 28 01 024 90 | holder | 1 | 2 |
| 2 | 09 30 31 022 90 | screw | 4 | 2 |
| 3 | 09 30 30 031 90 | screw | 8 | 2 |
| 4 | 09 30 11 024 90 | disc | 8 | 2 |
| 5 | 09 12 12 205 90 | base | 1 | 2 |
| 6 | 09 16 01 016 90 | ring | 1 | 2 |
| 7 | 90 23 01 032 00 90 | flow reducer | 1 | 2 |
| 8 | 09 14 10 130 90 | seal | 1 | 2 |
| 9 | 09 16 01 017 90 | ring | 1 | 2 |
| 10 | 09 17 11 146 90 | distributor | 1 | 60 |
| 11 | 09 17 97 057 90 | holder | 1 | 2 |
| 12 | 09 29 30 043 90 | insert | 1 | 2 |
| 13 | 09 12 01 075 90 | insert | 1 | 2 |
| 14 | 09 14 03 117 90 | seal | 1 | 2 |
| 15 | 09 27 98 004-00 | rosette | 1 | 10 |
| 16 | 09 31 11 048 90 | pin | 1 | 2 |
| 17 | 09 23 01 052 90 | flow reducer | 1 | 2 |