

META Wall valve clockwise closing 1/2" - Dark Chrome

META

36 607 660 Product version from 4/1/2024

- rosette Ø 60 mm
- head part with cut-to-length spindle and sleeve

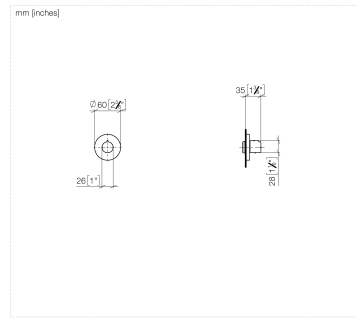


| | | |
|---|-------------------------------|---------------|
|  | Dark Chrome | 36 607 660-19 |
|  | Chrome | 36 607 660-00 |
|  | Brushed Platinum | 36 607 660-06 |
|  | Light Gold | 36 607 660-26 |
|  | Brushed Light Gold | 36 607 660-27 |
|  | Matte Black | 36 607 660-33 |
|  | Brushed Dark Brass | 36 607 660-39 |
|  | Brushed Bronze | 36 607 660-42 |
|  | Brushed Champagne (22kt Gold) | 36 607 660-46 |
|  | Champagne (22kt Gold) | 36 607 660-47 |
|  | Brushed Chrome | 36 607 660-93 |
|  | Brushed Dark Platinum | 36 607 660-99 |

Required miscellaneous

- Wall valve 1/2" -** 35 607 970 90
- min. recess depth 75 mm
 - max. recess depth 145 mm





Codes & Standards

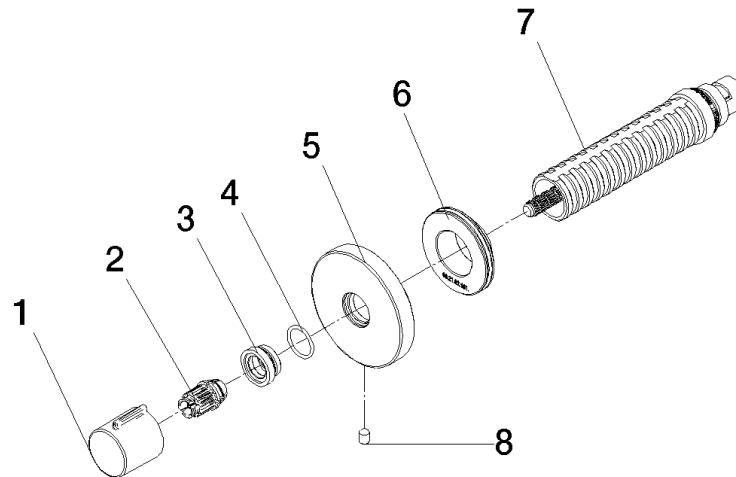
DIN 4109

ISO 3822

Ü-Zeichen

Certificates and sustainability

LGA_38



Spare parts list

| No. | Item Number | Name | Quantity used | Delivery time |
|-----|--------------------|------------|---------------|---------------|
| 8 | 09 31 11 004 90 | pin | 1.00 | 60 |
| 7 | 90 90 03 202 00 90 | top | 1.00 | 2 |
| 4 | 09 14 10 017 90 | seal | 1.00 | 2 |
| 5 | 90 27 67 021 94-19 | rosette | 1.00 | 20 |
| 2 | 09 12 12 005 90 | fixing cap | 1.00 | 2 |
| 1 | 09 20 98 001-19 | handle | 1.00 | 60 |
| 3 | 09 12 12 043-19 | base | 1.00 | 60 |
| 6 | 09 21 02 151 90 | sleeve | 1.00 | 2 |