

Wall valve clockwise closing 1/2" - Light Gold

SERIES SPECIFIC

36 607 740
Product version from 7/1/2023



- without rosette
- handle Ø 60mm
- without marking
- head part with cut-to-length spindle and sleeve
- WRAS

	Light Gold	36 607 740-26
	Chrome	36 607 740-00
	Brushed Platinum	36 607 740-06
	Dark Chrome	36 607 740-19
	Brushed Light Gold	36 607 740-27
	Brushed Durabrass (23kt Gold)	36 607 740-28
	Matte Black	36 607 740-33
	Brushed Bronze	36 607 740-42
	Brushed Champagne (22kt Gold)	36 607 740-46
	Champagne (22kt Gold)	36 607 740-47
	Brushed Chrome	36 607 740-93
	Brushed Dark Platinum	36 607 740-99

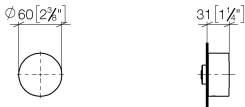
Wall valve clockwise closing 1/2" - Light Gold

SERIES SPECIFIC

36 607 740

Product version from 7/1/2023

mm [inches]



Codes & Standards			
DIN 4109	EN 1111	ISO 3822	Scottish Water Byelaws
UK Water Supply Regulations	Ü-Zeichen		

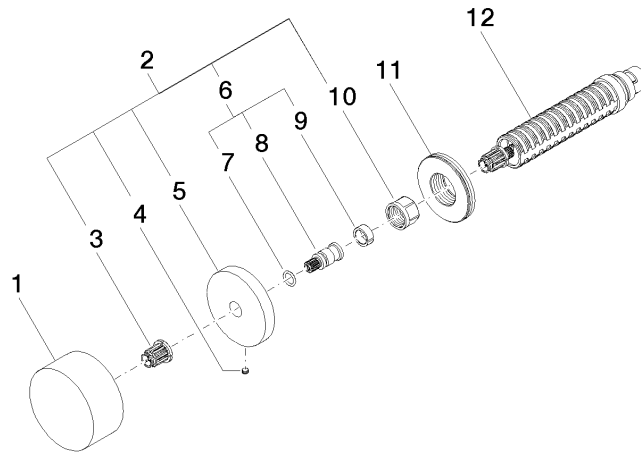
Certificates and sustainability				
WRAS_2011	LGA_38	LGA_29	WRAS_2010	DVGW_DW-6512DN0

Wall valve clockwise closing 1/2" - Light Gold

SERIES SPECIFIC

36 607 740 Product version from 7/1/2023

Parts for other
finishes can be found
here: [Chrome](#)



Spare parts list

No.	Item Number	Name	Quantity used	Delivery time
1	09 20 74 004-26	handle	1.00	60
3	90 12 12 002 00 90	fixing cap	1.00	2
7	90 14 10 060 00 90	seal	1.00	2
9	90 14 15 020 03 90	ring	1.00	2
11	09 30 01 107 90	sleeve	1.00	2
5	09 27 74 004-26	rosette	1.00	60
12	90 90 03 143 00 90	top	1.00	2
10	90 23 30 023 00 90	nut	1.00	2
2	04 27 74 004 00-26	rosette	1.00	60
4	09 31 11 055 90	pin	1.00	2
6	04 29 06 020 00-00	spindle	1.00	10
8	09 29 06 020-26	spindle	1.00	-

Spare part can no longer be ordered, please order the replacement item