

## TARA Wall valve clockwise closing 1/2" - Brushed Durabrand (23kt Gold)

TARA

36 607 892

- rosette Ø 55 mm
- head part with cut-to-length spindle and sleeve



	Brushed Durabrand (23kt Gold)	36 607 892-28
	Chrome	36 607 892-00
	Brushed Platinum	36 607 892-06
	Platinum	36 607 892-08
	Dark Chrome	36 607 892-19
	Matte Black	36 607 892-33
	Brushed Champagne (22kt Gold)	36 607 892-46
	Champagne (22kt Gold)	36 607 892-47
	Brushed Chrome	36 607 892-93
	Brushed Dark Platinum	36 607 892-99

### Required miscellaneous

#### Wall valve 1/2" -

35 607 970 90



- max. recess depth 145 mm
- min. recess depth 85 mm

36 607 892

mm [inches]



## Certificates

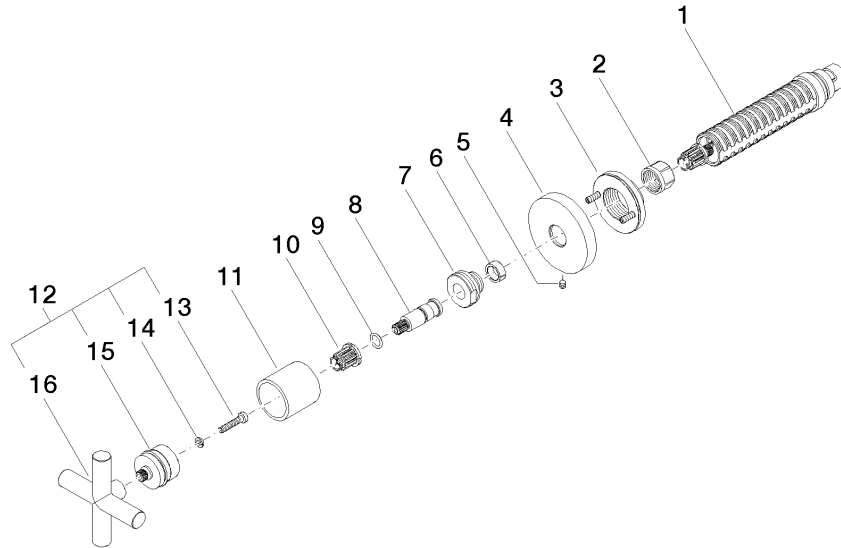
DVGW\_DW-  
6501DN0116.  
LGA\_29932.

WRAS\_2011026.

LGA\_29931.

WRAS\_2010066.

DVGW\_DW-  
6512DN0706.



## Spare parts list

No.	Item Number	Name	Quantity used	Delivery time
1	90 90 03 143 00 90	top	1	2
2	90 23 30 023 00 90	nut	1	2
3	90 21 02 108 00 90	disc	1	2
4	09 27 89 108-28	rosette	1	20
5	90 31 11 007 00 90	pin	1	2
6	90 14 15 020 03 90	ring	1	2
7	09 24 05 002 90	nipple	1	2
8	09 29 06 022 90	spindle	1	2
9	90 14 10 060 00 90	seal	1	2
10	90 12 12 002 00 90	fixing cap	1	2
11	09 21 02 144-28	sleeve	1	20
12	90 20 89 010 10-28	handle	1	20
13	90 30 30 075 00 90	screw	1	2
14	90 30 11 029 00 90	disc	1	2
15	90 12 12 007 00-28	base	1	20
16	09 20 89 010-28	handle	1	60