

TARA Wall valve clockwise closing 1/2" - Brushed Bronze

TARA

36 607 892

- rosette Ø 55 mm
- head part with cut-to-length spindle and sleeve
- WRAS 2011026, 2010066



	Brushed Bronze	36 607 892-42
	Chrome	36 607 892-00
	Brushed Platinum	36 607 892-06
	Platinum	36 607 892-08
	Dark Chrome	36 607 892-19
	Brushed Durabronze (23kt Gold)	36 607 892-28
	Matte Black	36 607 892-33
	Brushed Champagne (22kt Gold)	36 607 892-46
	Champagne (22kt Gold)	36 607 892-47
	Brushed Chrome	36 607 892-93
	Brushed Dark Platinum	36 607 892-99

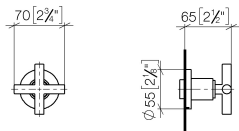


TARA Wall valve clockwise closing 1/2" - Brushed Bronze

TARA

36 607 892

mm [inches]



Codes & Standards

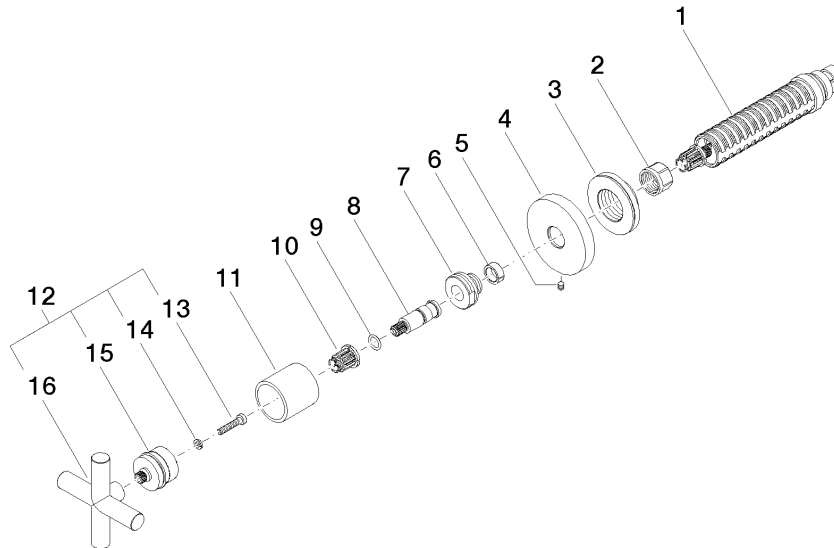
DIN 4109	EN 1111	ISO 3822	Scottish Water Byelaws
UK Water Supply Regulations	Ü-Zeichen		

Certificates

WRAS_2010	LGA_29	DVGW_DW-6512DN0	WRAS_2011
-----------	--------	-----------------	-----------

Product version from 10/27/2020

Parts for other
finishes can be found
here: [Chrome](#)





TARA Wall valve clockwise closing 1/2" - Brushed Bronze

TARA

36 607 892

Spare parts list

Product version from 10/27/2020