









SYMETRICS Wall valve anti-clockwise closing 1/2" - Brushed Platinum

IMO

36 607 985



- rosette 60 x 60 mm
- head part with cut-to-length spindle and sleeve
- WRAS 2011026, 2010066

| | | |
|--|---------------------------------|---------------|
|  | Brushed Platinum | 36 607 985-06 |
|  | Chrome | 36 607 985-00 |
|  | Platinum | 36 607 985-08 |
|  | Dark Chrome | 36 607 985-19 |
|  | Brushed Light Gold | 36 607 985-27 |
|  | Brushed Durabass (23kt Gold) | 36 607 985-28 |
|  | Brushed Chrome | 36 607 985-93 |
|  | Brushed Dark Platinum | 36 607 985-99 |

Required miscellaneous



- Wall valve 1/2" -** 35 607 970 90
- max. recess depth 145 mm
 - min. recess depth 75 mm

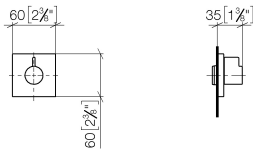


SYMETRICS Wall valve anti-clockwise closing 1/2" - Brushed Platinum

IMO

36 607 985

mm [inches]



Codes & Standards

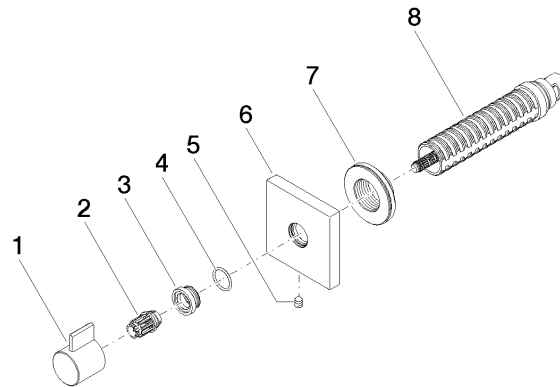
| | | | |
|----------------|----------|------------------------|-----------------------------|
| ASME A112.18.1 | cUPC | DIN 4109 | EN 1111 |
| EN 200 | ISO 3822 | Scottish Water Byelaws | UK Water Supply Regulations |

Ü-Zeichen

Certificates

| | | | | |
|-----------------|-----------------|-----------|--------|--------|
| IAPMO_4976 | DVGW_DW-6501DN0 | WRAS_2010 | LGA_29 | LGA_29 |
| DVGW_DW-6512DN0 | WRAS_2011 | | | |

Product version from 6/1/2024





SYMETRICS Wall valve anti-clockwise closing 1/2" - Brushed Platinum

IMO

36 607 985

Spare parts list

Product version from 6/1/2024

| No. | Item Number | Name | Quantity used | Delivery time |
|-----|-----------------|--------|---------------|---------------|
| | 09 20 98 002-06 | handle | 8 | 10 |