


VAIA Wall-mounted basin mixer without pop-up waste - Brushed Durabrass  
(23kt Gold)


VAIA

36 712 809			
	<ul style="list-style-type: none"> <li>• 190mm projection</li> <li>• fixed spout</li> <li>• circular, air-enriched flow</li> <li>• hole diameter valve 37 mm</li> <li>• hole diameter spout 40 mm</li> <li>• rosettes Ø 60 mm</li> <li>• max. flow 5.7 l/min</li> <li>• lead-free</li> <li>• This product can help a building meet the requirements of Green Building Rating Systems, e.g. LEED®, BREEAM®, DGNB</li> </ul>	<div>  Brushed Durabrass (23kt Gold) </div> <div>  Chrome </div> <div>  Brushed Platinum </div> <div>  Platinum </div> <div>  Dark Chrome </div> <div>  Brushed Bronze </div> <div>  Brushed Champagne (22kt Gold) </div> <div>  Champagne (22kt Gold) </div> <div>  Brushed Dark Platinum </div>	<div>36 712 809-28</div> <div>36 712 809-00</div> <div>36 712 809-06</div> <div>36 712 809-08</div> <div>36 712 809-19</div> <div>36 712 809-42</div> <div>36 712 809-46</div> <div>36 712 809-47</div> <div>36 712 809-99</div>

Required miscellaneous

	<b>Concealed wall-mounted mixer centred spout -</b> •max. recess depth 145 mm •min. recess depth 85 mm	35 700 970 90
---	--	---------------

Required miscellaneous

	<b>Concealed wall-mounted mixer variable positioning -</b> •min. recess depth 85 mm •max. recess depth 145 mm	35 720 970 90
---	---	---------------

# VAIA Wall-mounted basin mixer without pop-up waste - Brushed Durabrass (23kt Gold)

VAIA

36 712 809  
mm [inches]



Flow rate chart



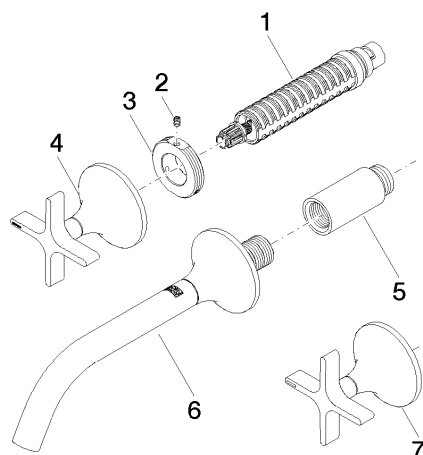
Trajectory diagram



## Certificates

LGA\_29297.

WRAS\_2312073.



## Spare parts list

No.	Item Number	Name	Quantity used	Delivery time
1	90 90 03 157 00 90	top	2	2
2	09 31 11 008 90	pin	2	2
3	09 21 02 163 90	disc	2	2
4	90 20 80 011 00-28	handle ( hot )	1	20
5	09 24 03 081 10 90	extension	1	2
6	13 800 809-28	VAIA Wall-mounted basin spout without pop-up waste - Brushed Durabross (23kt Gold)	1	20
7	90 20 80 010 00-28	handle ( cold )	1	20