





EDITION PRO Wall-mounted single-lever basin mixer without pop-up waste - Chrome

EDITION PRO


36 810 626



- 170mm projection
- fixed spout
- circular, air-enriched flow
- hole diameter spout 37 mm
- hole diameter single-lever mixer 57 mm
- rosette for spout Ø 55mm
- rosette for mixer Ø 78mm
- max. flow 7 l/min
- lead-free
- WRAS

	Chrome	36 810 626-00
	Matte Black	36 810 626-33
	Brushed Chrome	36 810 626-93

Required miscellaneous

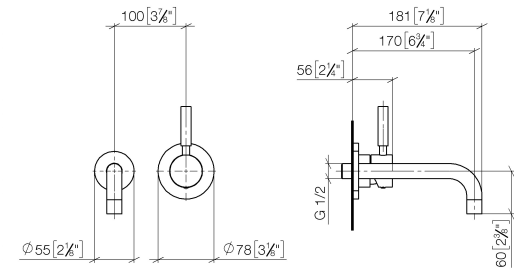


SERIES SPECIFIC Concealed wall-mounted single-lever mixer mixer on right -

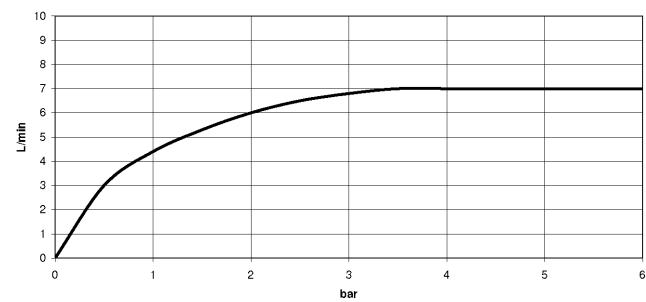
35 870 970 90

- max. recess depth 95 mm
- min. recess depth 80 mm

36 810 626  
mm [inches]



Flow rate chart



### Codes & Standards

DIN 4109

ISO 3822

Scottish Water  
Byelaws

UK Water Supply  
Regulations

Ü-Zeichen



## EDITION PRO Wall-mounted single-lever basin mixer without pop-up waste - Chrome

---

EDITION PRO

36 810 626

Certificates and sustainability

---

WRAS\_2107

LGA\_9



## Spare parts list

No.	Item Number	Name	Quantity used	Delivery time
6	09 11 02 522-00	cover	1.00	10
2	09 27 22 503-00	rosette	1.00	10
5	90 20 62 040 00-00	handle	1.00	10
4	90 23 01 019 00-00	aerator	1.00	10
3	04 28 22 115 10-00	spout	1.00	10
7	90 27 62 011 00-00	rosette	1.00	10
1	90 14 10 026 00 90	seal	1.00	2
8	09 24 04 105 90	nut	1.00	2
9	90 15 05 064 01 90	cartridge	1.00	2