
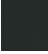



**EDITION PRO Wall-mounted single-lever basin mixer without pop-up waste -  
Chrome**

36 812 626



- 200mm projection
- fixed spout
- circular, air-enriched flow
- hole diameter spout 37 mm
- hole diameter single-lever mixer 57 mm
- rosette for spout Ø 55mm
- rosette for mixer Ø 78mm
- max. flow 7 l/min
- lead-free
- WRAS 2107048

	Chrome	36 812 626-00
	Matte Black	36 812 626-33
	Brushed Chrome	36 812 626-93

**Required miscellaneous**

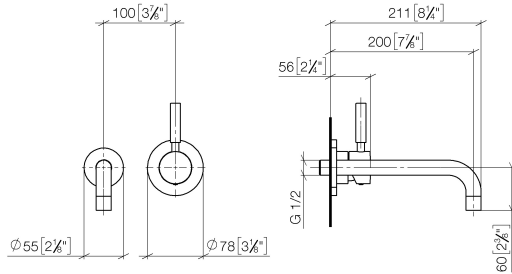


- EDITION PRO Concealed wall-mounted single-lever mixer mixer on right -** 35 870 970 90
- max. recess depth 95 mm
  - min. recess depth 80 mm

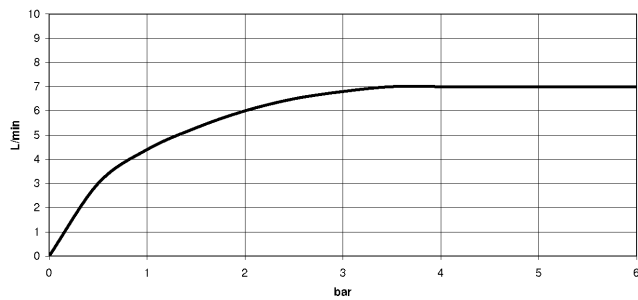
## EDITION PRO Wall-mounted single-lever basin mixer without pop-up waste - Chrome

36 812 626

mm [inches]



### Flow rate chart



### Codes & Standards

DIN 4109

ISO 3822

Scottish Water  
Byelaws

UK Water Supply  
Regulations

Ü-Zeichen



## EDITION PRO Wall-mounted single-lever basin mixer without pop-up waste - Chrome

---

36 812 626

Certificates

---

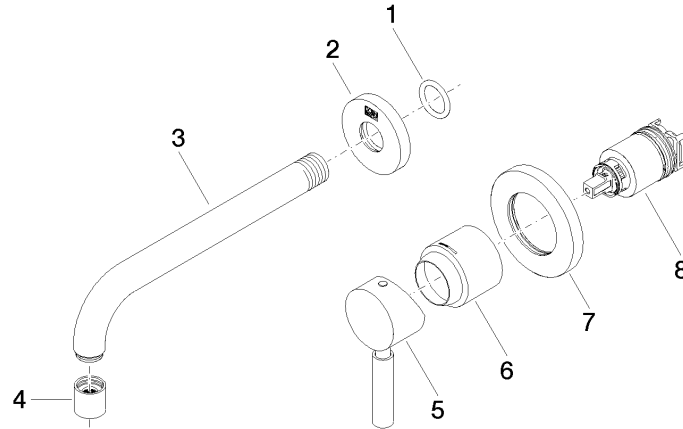
LGA\_9

WRAS\_2107

## EDITION PRO Wall-mounted single-lever basin mixer without pop-up waste - Chrome

---

36 812 626





EDITION PRO Wall-mounted single-lever basin mixer without pop-up waste -  
Chrome

36 812 626

Spare parts list

No.	Item Number	Name	Quantity used	Delivery time
	90 14 10 026 00 90	seal	8	2