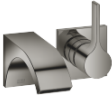







CYO Wall-mounted single-lever basin mixer without pop-up waste - Dark Chrome

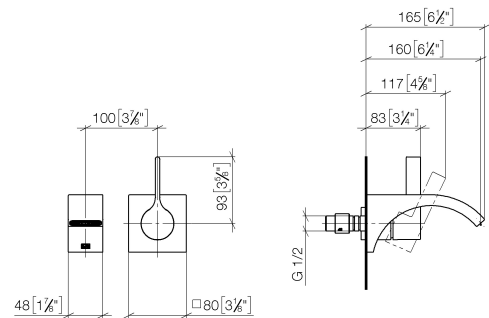
CYO

36 860 811			
	<ul style="list-style-type: none"> • 160mm projection • fixed spout • rectangular, air-enriched flow • hole diameter spout 37 mm • hole diameter single-lever mixer 57 mm • rosette for mixer 80 x 80mm • max. flow 4.5 l/min • lead-free • This product can help a building meet the requirements of Green Building Rating Systems, e.g. LEED®, BREEAM®, DGNB • WRAS 	<div>  Dark Chrome </div> <div>  Chrome </div> <div>  Brushed Platinum </div> <div>  Brushed Durabrass (23kt Gold) </div> <div>  Brushed Dark Platinum </div>	<div>36 860 811-19</div> <div>36 860 811-00</div> <div>36 860 811-06</div> <div>36 860 811-28</div> <div>36 860 811-99</div>

CYO Wall-mounted single-lever basin mixer without pop-up waste - Dark
Chrome

CYO

36 860 811
mm [inches]



Flow rate chart



Codes & Standards

ASME A112.18.1	cUPC	NSF372	NSF61
----------------	------	--------	-------



CYO Wall-mounted single-lever basin mixer without pop-up waste - Dark Chrome

CYO

36 860 811

Certificates and sustainability

IAPMO_N-4976

IAPMO_6397

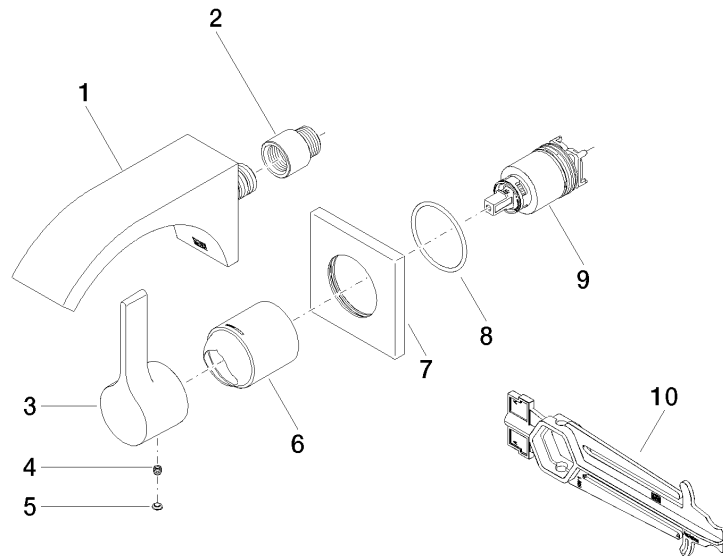
IAPMO_4976 (

CYO Wall-mounted single-lever basin mixer without pop-up waste - Dark Chrome

CYO

36 860 811

Parts for other
finishes can be found
here: [Chrome](#)



Spare parts list

No.	Item Number	Name	Quantity used	Delivery time
	2 09 24 03 072 10 90	nipple	1.00	2
	3 09 20 80 021-19	handle	1.00	20
	8 90 14 10 049 00 90	seal	1.00	2
	9 90 15 05 064 01 90	cartridge	1.00	2
	7 09 27 78 039-19	rosette	1.00	20
	4 90 31 11 030 00 90	pin	1.00	2
	5 90 31 20 087 00-19	plug	1.00	20
	6 09 11 02 288-19	cover	1.00	20
	1 13 800 811-19	CYO Wall-mounted basin spout without pop-up waste - Dark Chrome	1.00	20
	10 90 30 09 064 00 90	key	1.00	2