








LISSÉ Wall-mounted single-lever basin mixer without pop-up waste - Brushed Platinum

LISSÉ

36 860 845 Product version up to 4/1/2024



- 170mm projection
- fixed spout
- circular, air-enriched flow
- hole diameter spout 37 mm
- hole diameter single-lever mixer 57 mm
- rosette 78 x 78 mm
- max. flow 5.7 l/min
- lead-free
- This product can help a building meet the requirements of Green Building Rating Systems, e.g. LEED®, BREEAM®, DGNB
- WRAS

| | | |
|---|-----------------------|---------------|
|  | Brushed Platinum | 36 860 845-06 |
|  | Chrome | 36 860 845-00 |
|  | Dark Chrome | 36 860 845-19 |
|  | Brushed Light Gold | 36 860 845-27 |
|  | Matte Black | 36 860 845-33 |
|  | Brushed Chrome | 36 860 845-93 |
|  | Brushed Dark Platinum | 36 860 845-99 |

Required miscellaneous



Concealed wall-mounted single-lever mixer - 35 860 970 90

- max. recess depth 95 mm
- min. recess depth 80 mm
- mixer can be placed above, to the left or to the right of the spout.

Required miscellaneous



Concealed wall-mounted single-lever mixer mixer on right - 35 816 970 90

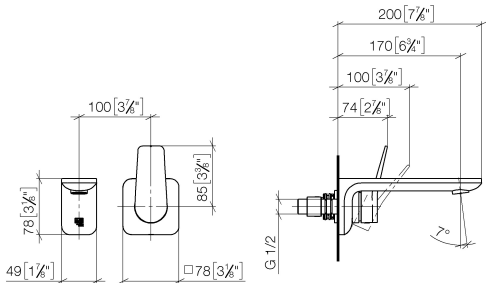
- NOTE: Not suitable for concealed installation. Connection by means of angle valves, mounted with screws to back wall.



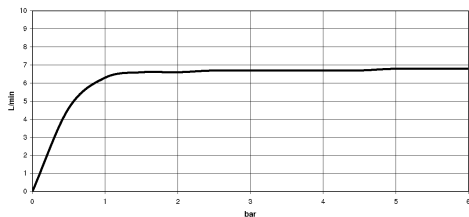
LISSÉ Wall-mounted single-lever basin mixer without pop-up waste - Brushed Platinum

LISSÉ

36 860 845 Product version up to 4/1/2024
mm [inches]



Flow rate chart



Codes & Standards

| | | | |
|------------------------|-----------------------------|-----------|------------|
| ASME A112.18.1 | cUPC | DIN 4109 | EN 817 |
| EPA WaterSense | ISO 3822 | NSF372 | NSF61 |
| Scottish Water Byelaws | UK Water Supply Regulations | Ü-Zeichen | WaterSense |





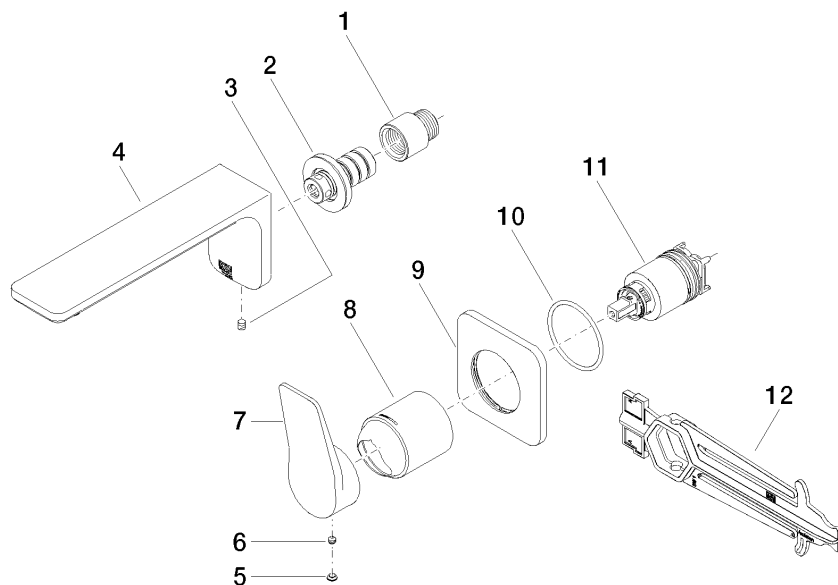
LISSE Wall-mounted single-lever basin mixer without pop-up waste - Brushed Platinum

LISSE

36 860 845 Product version up to 4/1/2024

Certificates and sustainability

| | | | | |
|--------------|-----------------|------------|--------|-----------|
| IAPMO_N-4976 | DVGW_DW-6512DN0 | IAPMO_6397 | LGA_29 | WRAS_2107 |
| IAPMO_4976 (| IAPMO_8834 | | | |



Spare parts list

| No. | Item Number | Name | Quantity used | Delivery time |
|-----|--------------------|------------|---------------|---------------|
| 1 | 09 24 03 072 10 90 | nipple | 1.00 | 2 |
| 11 | 90 15 05 064 01 90 | cartridge | 1.00 | 2 |
| 2 | 90 24 03 108 00 90 | nipple set | 1.00 | 2 |
| 7 | 09 20 84 021-06 | handle | 1.00 | 10 |
| 8 | 09 11 02 288-06 | cover | 1.00 | 10 |
| 4 | 90 11 84 021 00-06 | spout | 1.00 | 10 |
| 5 | 90 31 20 087 00-06 | plug | 1.00 | 10 |
| 6 | 90 31 11 063 00 90 | pin | 1.00 | 2 |
| 12 | 90 30 09 064 00 90 | key | 1.00 | 2 |
| 3 | 90 31 11 004 00 90 | pin | 1.00 | 2 |
| 10 | 90 14 10 049 00 90 | seal | 1.00 | 2 |
| 9 | 90 27 84 020 00-06 | rosette | 1.00 | 10 |