

## META META PURE Wall-mounted single-lever basin mixer without pop-up waste - Dark Chrome

META

36 861 664



- 250mm projection
- fixed spout
- circular, air-enriched flow
- hole diameter spout 37 mm
- hole diameter single-lever mixer 57 mm
- rosette for spout Ø 55mm
- rosette for mixer Ø 78mm
- max. flow 5.7 l/min
- lead-free
- This product can help a building meet the requirements of Green Building Rating Systems, e.g. LEED®, BREEAM®, DGNB
- WRAS

	Dark Chrome	36 861 664-19
	Chrome	36 861 664-00
	Brushed Platinum	36 861 664-06
	Light Gold	36 861 664-26
	Brushed Light Gold	36 861 664-27
	Matte Black	36 861 664-33
	Brushed Dark Brass	36 861 664-39
	Brushed Bronze	36 861 664-42
	Brushed Champagne (22kt Gold)	36 861 664-46
	Champagne (22kt Gold)	36 861 664-47
	Brushed Chrome	36 861 664-93
	Brushed Dark Platinum	36 861 664-99

### Required miscellaneous



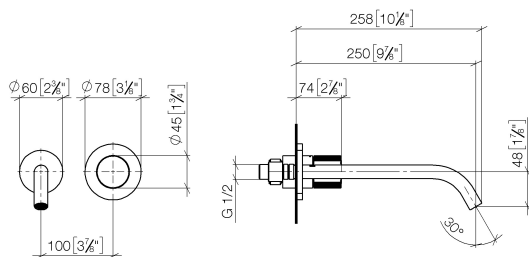
#### **Concealed wall-mounted single-lever mixer -** 35 860 970 90

- max. recess depth 95 mm
- min. recess depth 80 mm
- mixer can be placed above, to the left or to the right of the spout.

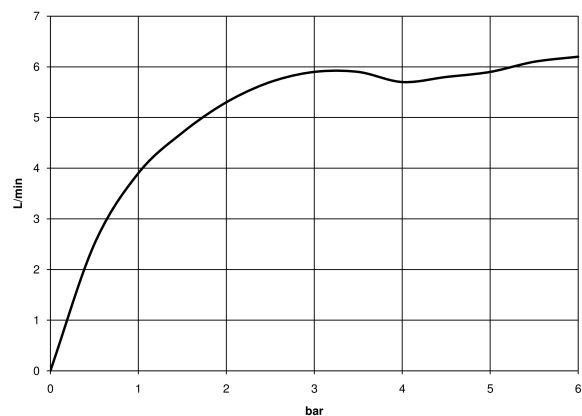
# META META PURE Wall-mounted single-lever basin mixer without pop-up waste - Dark Chrome

META

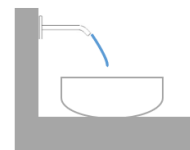
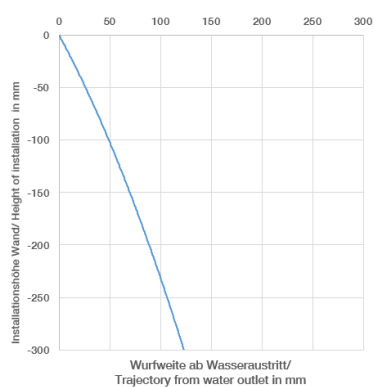
36 861 664  
mm [inches]



Flow rate chart



Trajectory diagram



## Codes & Standards

DIN 4109

EN 817

ISO 3822

Ü-Zeichen



## META META PURE Wall-mounted single-lever basin mixer without pop-up waste - Dark Chrome

---

META

36 861 664

Certificates and sustainability

---

DVGW\_DW-  
6512DN0

LGA\_29

**META META PURE Wall-mounted single-lever basin mixer without pop-up  
waste - Dark Chrome**

META

36 861 664

