

META META PURE Wall-mounted single-lever basin mixer without pop-up waste - Brushed Light Gold

META

36 861 664 Product version from 7/1/2023



- 250mm projection
- fixed spout
- circular, air-enriched flow
- hole diameter spout 37 mm
- hole diameter single-lever mixer 57 mm
- rosette for spout Ø 55mm
- rosette for mixer Ø 78mm
- max. flow 5.7 l/min
- lead-free
- This product can help a building meet the requirements of Green Building Rating Systems, e.g. LEED®, BREEAM®, DGNB
- WRAS

	Brushed Light Gold	36 861 664-27
	Chrome	36 861 664-00
	Brushed Platinum	36 861 664-06
	Dark Chrome	36 861 664-19
	Light Gold	36 861 664-26
	Matte Black	36 861 664-33
	Brushed Dark Brass	36 861 664-39
	Brushed Bronze	36 861 664-42
	Brushed Champagne (22kt Gold)	36 861 664-46
	Champagne (22kt Gold)	36 861 664-47
	Brushed Chrome	36 861 664-93
	Brushed Dark Platinum	36 861 664-99

Required miscellaneous



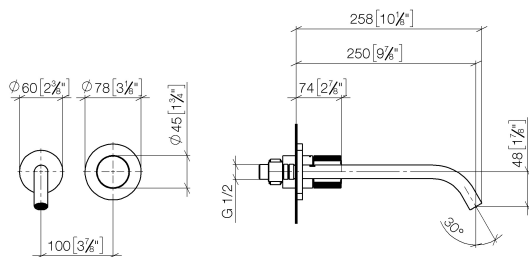
Concealed wall-mounted single-lever mixer - 35 860 970 90

- min. recess depth 80 mm
- max. recess depth 95 mm
- mixer can be placed above, to the left or to the right of the spout.

META META PURE Wall-mounted single-lever basin mixer without pop-up waste - Brushed Light Gold

META

36 861 664 Product version from 7/1/2023
mm [inches]



Flow rate chart



Trajectory diagram



Codes & Standards

DIN 4109

EN 817

ISO 3822

Ü-Zeichen



META META PURE Wall-mounted single-lever basin mixer without pop-up waste - Brushed Light Gold

META

36 861 664 Product version from 7/1/2023

Certificates and sustainability

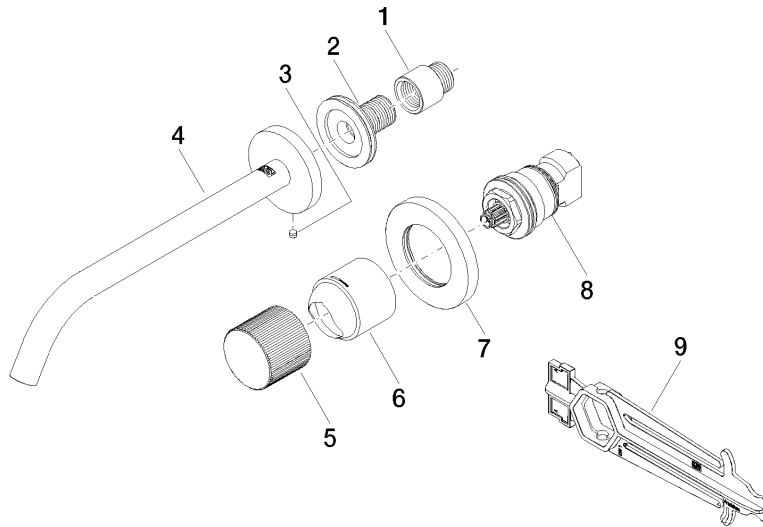
DVGW_DW-
6512DN0

LGA_29

META META PURE Wall-mounted single-lever basin mixer without pop-up waste - Brushed Light Gold

META

36 861 664 Product version from 7/1/2023



Spare parts list

No.	Item Number	Name	Quantity used	Delivery time
9	90 30 09 064 00 90	key	1.00	2
4	90 28 22 324 00-27	spout	1.00	30
5	09 20 66 010-27	handle	1.00	30
3	09 31 11 112 90	pin	1.00	60
6	09 11 02 389-27	cover	1.00	-
Spare part can no longer be ordered, please order the replacement item				
8	90 90 03 169 02 90	top	1.00	2
2	90 24 03 280 00 90	nipple	1.00	2
7	90 27 62 011 00-27	rosette	1.00	30
1	09 24 03 072 10 90	nipple	1.00	2