

MEM Wall-mounted single-lever basin mixer without pop-up waste - Platinum

MEM

36 867 782



- 125mm projection
- fixed spout
- rectangular, air-enriched flow
- hole diameter spout 35 mm
- hole diameter single-lever mixer 57 mm
- rosette for spout 80 x 60mm
- rosette for mixer 80 x 80mm
- max. flow 5.7 l/min
- lead-free
- This product can help a building meet the requirements of Green Building Rating Systems, e.g. LEED®, BREEAM®, DGNB

| | | |
|--|--------------------------------|---------------|
| | Platinum | 36 867 782-08 |
| | Chrome | 36 867 782-00 |
| | Brushed Platinum | 36 867 782-06 |
| | Dark Chrome | 36 867 782-19 |
| | Brushed Durabronze (23kt Gold) | 36 867 782-28 |
| | Brushed Champagne (22kt Gold) | 36 867 782-46 |
| | Champagne (22kt Gold) | 36 867 782-47 |
| | Brushed Dark Platinum | 36 867 782-99 |

Required miscellaneous



Concealed wall-mounted single-lever mixer mixer on right - 35 816 970 90

- NOTE: Not suitable for concealed installation. Connection by means of angle valves, mounted with screws to back wall.

Required miscellaneous



Drybox Wall-mounted single-lever basin mixer Mixer on right/left/or above - 39 807 970 90

Required miscellaneous

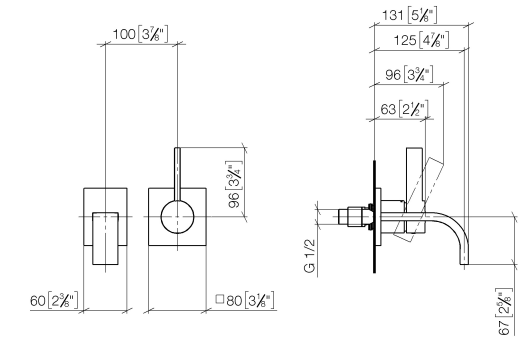


Concealed wall-mounted single-lever mixer - 35 860 970 90

- max. recess depth 95 mm
- min. recess depth 75 mm

36 867 782

mm [inches]



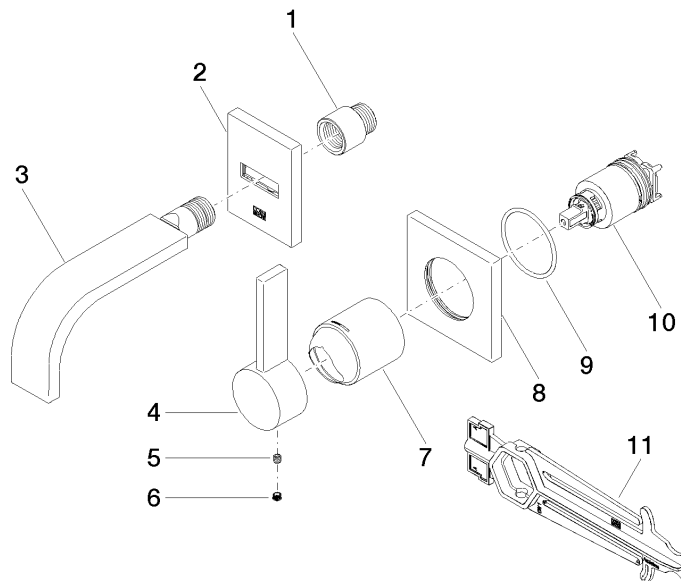
Flow rate chart



Certificates

LGA_38451. WRAS_2107018.

36 867 782



Spare parts list

| No. | Item Number | Name | Quantity used | Delivery time |
|-----|--------------------|-----------|---------------|---------------|
| 1 | 09 24 03 072 10 90 | nipple | 1 | 2 |
| 2 | 90 27 78 038 00-08 | rosette | 1 | 40 |
| 3 | 90 28 22 357 00-08 | spout | 1 | 40 |
| 4 | 09 20 78 058-08 | handle | 1 | 40 |
| 5 | 90 31 11 030 00 90 | pin | 1 | 2 |
| 6 | 90 31 20 109 00 90 | plug | 1 | 2 |
| 7 | 09 11 02 288-08 | cover | 1 | 40 |
| 8 | 09 27 78 039-08 | rosette | 1 | 40 |
| 9 | 90 14 10 049 00 90 | seal | 1 | 2 |
| 10 | 90 15 05 064 01 90 | cartridge | 1 | 2 |
| 11 | 90 30 09 064 00 90 | key | 1 | 2 |