

## MEM Wall-mounted single-lever basin mixer without pop-up waste -

MEM

36 867 782



- 125mm projection
- fixed spout
- rectangular, air-enriched flow
- hole diameter spout 35 mm
- hole diameter single-lever mixer 57 mm
- rosette for spout 80 x 60mm
- rosette for mixer 80 x 80mm
- max. flow 5.7 l/min
- lead-free
- This product can help a building meet the requirements of Green Building Rating Systems, e.g. LEED®, BREEAM®, DGNB
- WRAS 2107018

36 867 782-43

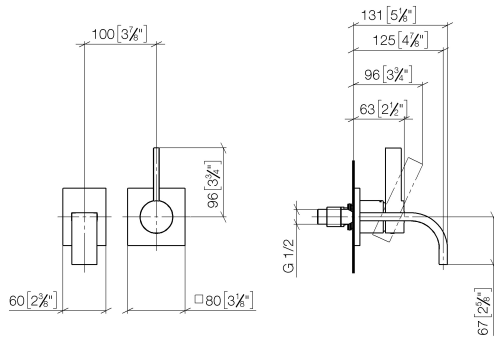
	Chrome	36 867 782-00
	Brushed Platinum	36 867 782-06
	Platinum	36 867 782-08
	Dark Chrome	36 867 782-19
	Brushed Durabronze (23kt Gold)	36 867 782-28
		36 867 782-39
	Brushed Bronze	36 867 782-42
	Brushed Champagne (22kt Gold)	36 867 782-46
	Champagne (22kt Gold)	36 867 782-47
	Brushed Dark Platinum	36 867 782-99

MEM Wall-mounted single-lever basin mixer without pop-up waste -

MEM

36 867 782

mm [inches]



Flow rate chart



Codes & Standards

DIN 4109

ISO 3822

Scottish Water  
Byelaws

UK Water Supply  
Regulations

Ü-Zeichen



## MEM Wall-mounted single-lever basin mixer without pop-up waste -

---

MEM

36 867 782

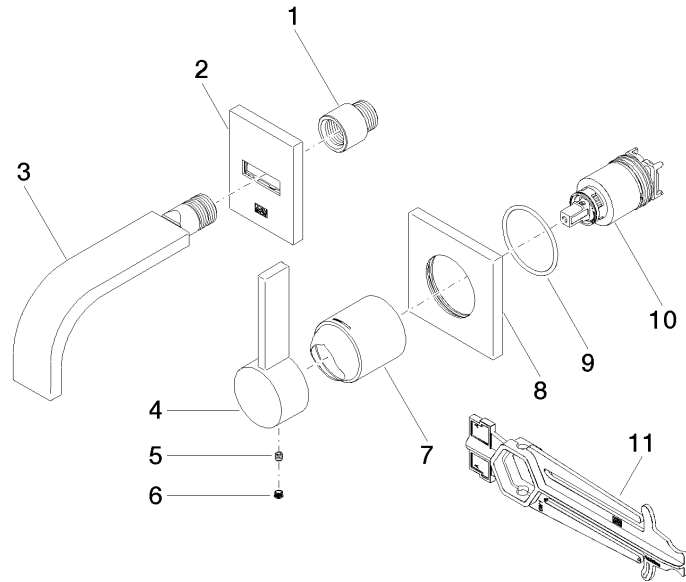
### Certificates

---

LGA\_38

WRAS\_2107

Parts for other  
finishes can be found  
here: [Chrome](#)





## MEM Wall-mounted single-lever basin mixer without pop-up waste -

---

MEM

36 867 782

### **Spare parts list**