







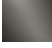
MADISON Tissue holder without cover - Brushed Dark Brass

MADISON

83 500 361    Product version from 7/3/2016



- width 145mm
- height 120 mm
- 95mm projection

|   |                               |               |
|---|-------------------------------|---------------|
|  | Brushed Dark Brass            | 83 500 361-39 |
|  | Chrome                        | 83 500 361-00 |
|  | Brushed Platinum              | 83 500 361-06 |
|  | Platinum                      | 83 500 361-08 |
|  | Durabrass (23kt Gold)         | 83 500 361-09 |
|  | Brushed Durabrass (23kt Gold) | 83 500 361-28 |
|  | Brushed Dark Platinum         | 83 500 361-99 |

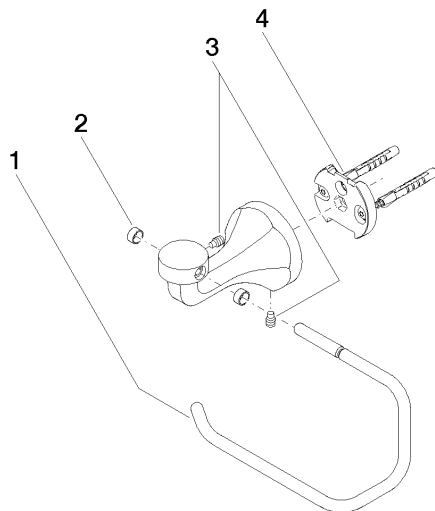
83 500 361 Product version from 7/3/2016

mm [inches]



83 500 361 Product version from 7/3/2016

Parts for other  
finishes can be found  
here: [Chrome](#)



## Spare parts list

| No.  | Item Number        | Name       | Quantity used | Delivery time |
|--|--------------------|------------|---------------|---------------|
| 1  | 08 18 70 501-39    | bow        | 1.00          | -             |
| Spare part can no longer be ordered, please order the replacement item |                    |            |               |               |
| 4  | 05 17 97 507 00 90 | fixing set | 1.00          | 2             |
| 3  | 04 31 11 140 00 90 | pin        | 2.00          | 2             |
| 2  | 08 18 40 505 90    | sleeve     | 2.00          | 2             |