

TARA xTOOL Thermostat module with 1 valve - Brushed Chrome

TARA

ST 060 109 8892



- cover plate Ø 124 mm
- rosette Ø 55 mm
- temperature control handle with safety limit stop at 38°C
- thermostat cartridge
- head part with cut-to-length spindle and sleeve

	Brushed Chrome	ST 060 109 8892-93
	Chrome	ST 060 109 8892-00
	Brushed Platinum	ST 060 109 8892-06
	Platinum	ST 060 109 8892-08
	Brushed Light Gold	ST 060 109 8892-27
	Brushed Durabronze (23kt Gold)	ST 060 109 8892-28
	Matte Black	ST 060 109 8892-33
	Brushed Champagne (22kt Gold)	ST 060 109 8892-46
	Champagne (22kt Gold)	ST 060 109 8892-47
	Brushed Dark Platinum	ST 060 109 8892-99

Individual components of this set

You need the following components for this set



1x 36 501 979-93



1x 36 607 892-93

ST 060 109 8892

Error: Subreport could not be shown.



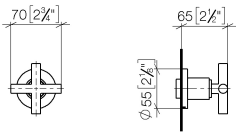
- rosette Ø 55 mm
- head part with cut-to-length spindle and sleeve
- WRAS 2011026, 2010066

	Brushed Chrome	36 607 892-9
	Chrome	36 607 892-0
	Brushed Platinum	36 607 892-0
	Platinum	36 607 892-0
	Dark Chrome	36 607 892-1
	Brushed Durabronze (23kt Gold)	36 607 892-2
	Matte Black	36 607 892-3
	Brushed Bronze	36 607 892-4
	Brushed Champagne (22kt Gold)	36 607 892-4
	Champagne (22kt Gold)	36 607 892-4
	Brushed Dark Platinum	36 607 892-9

3  
—  
0  
—  
6  
—  
8  
—  
9  
—  
8  
—  
3  
—  
2  
—  
6  
—  
7  
—  
9  
—

ST 060 109 8892

mm [inches]



Certificates

DVGW_DW-6501DN0	IAPMO_4976	WRAS_2010	LGA_29	LGA_29
DVGW_DW-6512DN0	WRAS_2011			

Codes & Standards

ASME A112.18.1	cUPC	DIN 4109	EN 1111
EN 200	ISO 3822	Scottish Water Byelaws	UK Water Supply Regulations

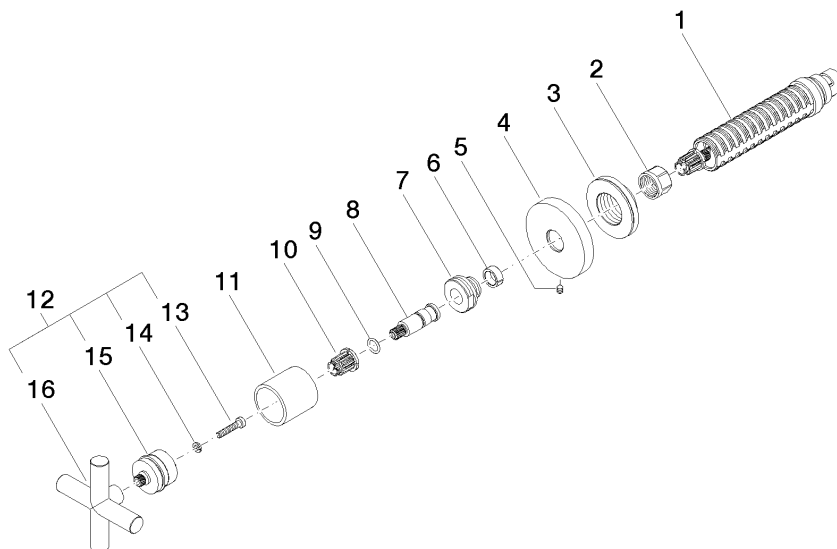
Ü-Zeichen

ST 060 109 8892

Product version up to 10/27/2020

**Product version from 10/27/2020**

Parts for other  
finishes can be found  
here: Chrome



ST 060 109 8892

Spare parts list

Product version up to 10/27/2020

Product version from 10/27/2020

No.	Item Number	Name	Quantity used	Delivery time
	90 90 03 143 00 90	top	16	2