

TARA xTOOL Thermostat module with 3 valves - Champagne (22kt Gold)

TARA

ST 060 112 9892



- cover plate Ø 124 mm
- rosette Ø 55 mm
- temperature control handle with safety limit stop at 38°C
- thermostat cartridge
- 3x head part with cut-to-length spindle and sleeve

	Champagne (22kt Gold)	ST 060 112 9892-47
	Chrome	ST 060 112 9892-00
	Brushed Platinum	ST 060 112 9892-06
	Platinum	ST 060 112 9892-08
	Brushed Light Gold	ST 060 112 9892-27
	Brushed Durabrass (23kt Gold)	ST 060 112 9892-28
	Matte Black	ST 060 112 9892-33
	Brushed Champagne (22kt Gold)	ST 060 112 9892-46
	Brushed Chrome	ST 060 112 9892-93
	Brushed Dark Platinum	ST 060 112 9892-99

Individual components of this set

You need the following components for this set

1x 36 503 979-47

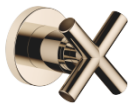


3x 36 607 892-47



ST 060 112 9892

Error: Subreport could not be shown.




- rosette Ø 55 mm
- head part with cut-to-length spindle and sleeve
- WRAS 2011026, 2010066

	Champagne (22kt Gold)	36 607 892-4
	Chrome	36 607 892-0
	Brushed Platinum	36 607 892-0
	Platinum	36 607 892-0
	Dark Chrome	36 607 892-1
	Brushed Durabrass (23kt Gold)	36 607 892-2
	Matte Black	36 607 892-3
	Brushed Bronze	36 607 892-4
	Brushed Champagne (22kt Gold)	36 607 892-4
	Brushed Chrome	36 607 892-9
	Brushed Dark Platinum	36 607 892-9

ST 060 112 9892

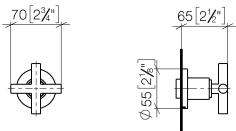
.7  
—  
10  
—  
16  
—  
18  
—  
9  
—  
8  
—  
3  
—  
2  
—  
6  
—  
3  
—  
9  
—

Required miscellaneous

		<b>Wall valve 1/2" -</b>	35 607 970 90
		•max. recess depth 145 mm	
		•min. recess depth 85 mm	

ST 060 112 9892

mm [inches]



Certificates

DVGW_DW-6501DN0	WRAS_2010	LGA_29	DVGW_DW-6512DN0	WRAS_2011
-----------------	-----------	--------	-----------------	-----------

Codes & Standards

DIN 4109

EN 1111

EN 200

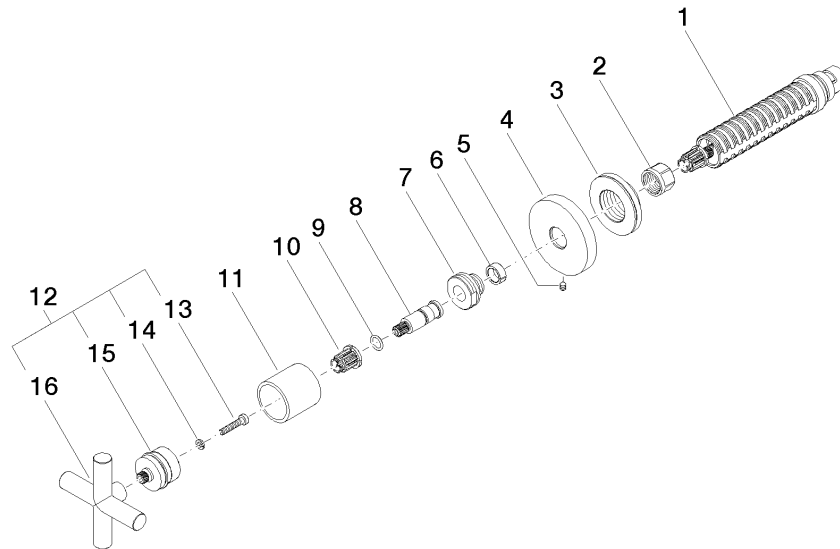
ISO 3822

Scottish Water  
Byelaws

UK Water Supply  
Regulations

Ü-Zeichen

**Product version from 10/27/2020**



## **Spare parts list**

**Product version from 10/27/2020**