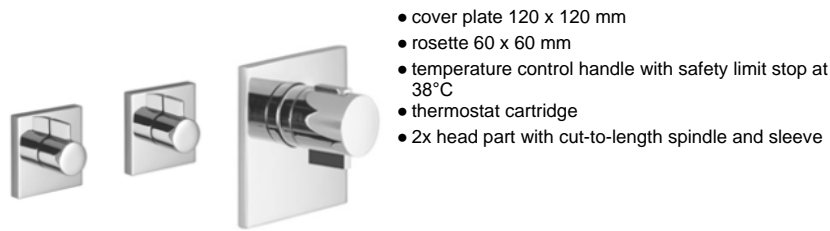



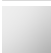
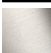




SYMETRICS xTOOL Thermostat module - Brushed Light Gold

IMO

ST 060 113 2985



- cover plate 120 x 120 mm
- rosette 60 x 60 mm
- temperature control handle with safety limit stop at 38°C
- thermostat cartridge
- 2x head part with cut-to-length spindle and sleeve

	Brushed Light Gold	ST 060 113 2985-27
	Chrome	ST 060 113 2985-00
	Brushed Platinum	ST 060 113 2985-06
	Platinum	ST 060 113 2985-08
	Brushed Durabronz (23kt Gold)	ST 060 113 2985-28
	Brushed Chrome	ST 060 113 2985-93
	Brushed Dark Platinum	ST 060 113 2985-99

Individual components of this set

You need the following components for this set



1x 36 503 985-27



2x 36 607 985-27

ST 060 113 2985

Error: Subreport could not be shown.



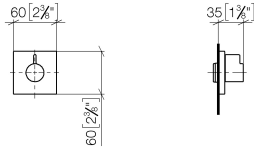
- rosette 60 x 60 mm
- head part with cut-to-length spindle and sleeve
- WRAS 2011026, 2010066

	Brushed Light Gold	36 607 985-2
	Chrome	36 607 985-0
	Brushed Platinum	36 607 985-0
	Platinum	36 607 985-0
	Dark Chrome	36 607 985-1
	Brushed Durabass (23kt Gold)	36 607 985-2
	Brushed Chrome	36 607 985-9
	Brushed Dark Platinum	36 607 985-9

:7
—
10
—
16
—
18
—
9
—
8
—
13
—
19
—

ST 060 113 2985

mm [inches]



Certificates

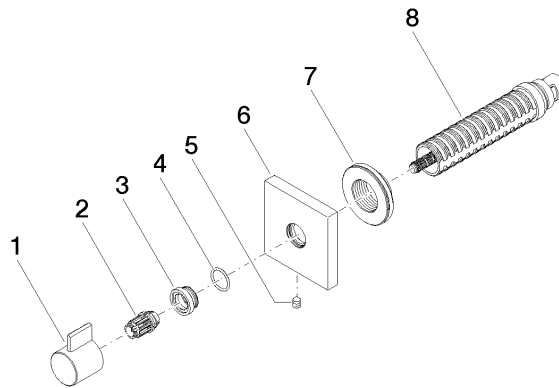
WRAS_2010	LGA_29	DVGW_DW-6512DN0	WRAS_2011
-----------	--------	-----------------	-----------

Codes & Standards

DIN 4109	EN 1111	ISO 3822	Scottish Water Byelaws
UK Water Supply Regulations	Ü-Zeichen		

Product version from 6/1/2024

Parts for other
finishes can be found
here: [Chrome](#)





ST 060 113 2985

Spare parts list

Product version from 6/1/2024

No.	Item Number	Name	Quantity used	Delivery time
	09 20 98 002-27	handle	8	60