

Flush plate for concealed WC cisterns made by Geberit round - Champagne  
(22kt Gold)

SERIES SPECIFIC

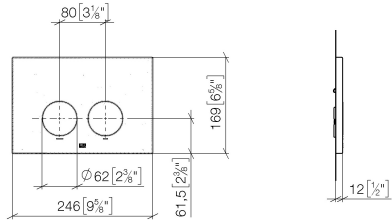
12 665 979	Product version from 4/1/2024		
	<ul style="list-style-type: none"> <li>cover plate 169 x 246 x 12 mm</li> <li>Mechanical flush plate with manual flush buttons</li> <li>For 2-volume flushing system</li> <li>Includes mounting frame, actuator rods and fastening material</li> <li>Sound-absorbing push rods, tool-free fast adjustment</li> <li>Compatible with all Geberit Sigma series cisterns from 2001 onwards</li> </ul>		
	Not compatible with GEBERIT Duo Fresh module		
		<div> <div></div> <div>Champagne (22kt Gold)</div> </div>	12 665 979-47
		<div> <div></div> <div>Chrome</div> </div>	12 665 979-00
		<div> <div></div> <div>Brushed Platinum</div> </div>	12 665 979-06
		<div> <div></div> <div>Platinum</div> </div>	12 665 979-08
		<div> <div></div> <div>Durabrass (23kt Gold)</div> </div>	12 665 979-09
		<div> <div></div> <div>Dark Chrome</div> </div>	12 665 979-19
		<div> <div></div> <div>Light Gold</div> </div>	12 665 979-26
		<div> <div></div> <div>Brushed Light Gold</div> </div>	12 665 979-27
		<div> <div></div> <div>Brushed Durabrass (23kt Gold)</div> </div>	12 665 979-28
		<div> <div></div> <div>Matte Black</div> </div>	12 665 979-33
		<div> <div></div> <div>Brushed Dark Brass</div> </div>	12 665 979-39
		<div> <div></div> <div>Brushed Bronze</div> </div>	12 665 979-42
		<div> <div></div> <div>Brushed Champagne (22kt Gold)</div> </div>	12 665 979-46
		<div> <div></div> <div>Brushed Chrome</div> </div>	12 665 979-93
		<div> <div></div> <div>Brushed Dark Platinum</div> </div>	12 665 979-99

# Flush plate for concealed WC cisterns made by Geberit round - Champagne (22kt Gold)

SERIES SPECIFIC

12 665 979 Product version from 4/1/2024

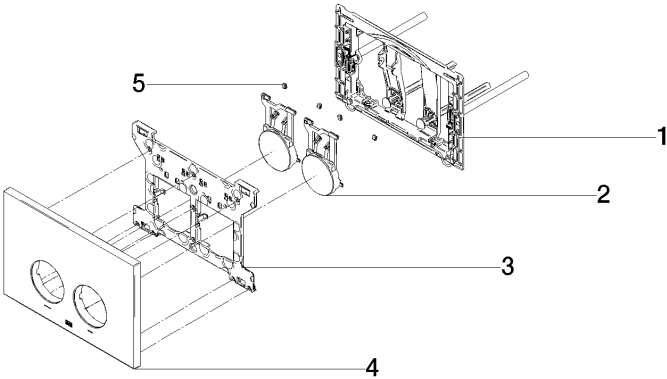
mm [inches]



Flush plate for concealed WC cisterns made by Geberit round - Champagne  
(22kt Gold)

SERIES SPECIFIC

12 665 979    Product version from 4/1/2024  
Parts for other  
finishes can be found  
here: Chrome



Spare parts list

No.	Item Number	Name	Quantity used	Delivery time
2	90 20 97 100 00-47	button	1.00	30
3	90 28 10 212 00 90	base	1.00	2
1	90 28 01 030 00 90	base	1.00	2
4	90 11 97 012 00-47	cover	1.00	30
5	90 14 05 090 00 90	ring	1.00	2