

## META Bath spout for wall mounting - Matte Black

META

13 801 660 Product version up to 5/27/2021



- 200mm projection
- circular normal flow
- rosette Ø 60 mm
- hole diameter 37 mm
- 1/2" connection
- max. flow 24.6 l/min at 3 bar flow pressure
- WRAS

|   |                               |               |
|---|-------------------------------|---------------|
|    | Matte Black                   | 13 801 660-33 |
|    | Chrome                        | 13 801 660-00 |
|    | Brushed Platinum              | 13 801 660-06 |
|    | Dark Chrome                   | 13 801 660-19 |
|    | Light Gold                    | 13 801 660-26 |
|    | Brushed Light Gold            | 13 801 660-27 |
|    | Brushed Dark Brass            | 13 801 660-39 |
|    | Brushed Bronze                | 13 801 660-42 |
|    | Brushed Champagne (22kt Gold) | 13 801 660-46 |
|   | Champagne (22kt Gold)         | 13 801 660-47 |
|  | Brushed Chrome                | 13 801 660-93 |
|  | Brushed Dark Platinum         | 13 801 660-99 |

### Recommended miscellaneous

#### Concealed wall elbow -

35 085 970 90



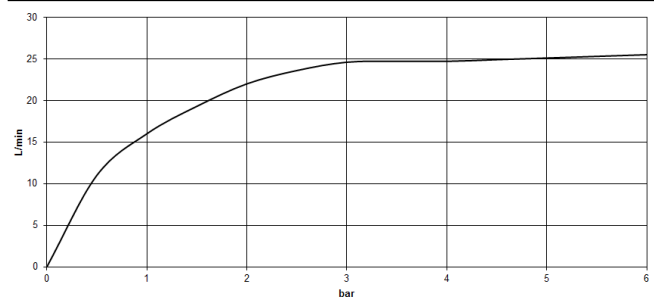
- max. recess depth 163 mm
- min. recess depth 90 mm

13 801 660 Product version up to 5/27/2021

mm [inches]



Flow rate chart



### Codes & Standards

|                           |                                |           |          |
|---------------------------|--------------------------------|-----------|----------|
| ASME A112.18.1            | cUPC                           | DIN 4109  | ISO 3822 |
| Scottish Water<br>Byelaws | UK Water Supply<br>Regulations | Ü-Zeichen |          |



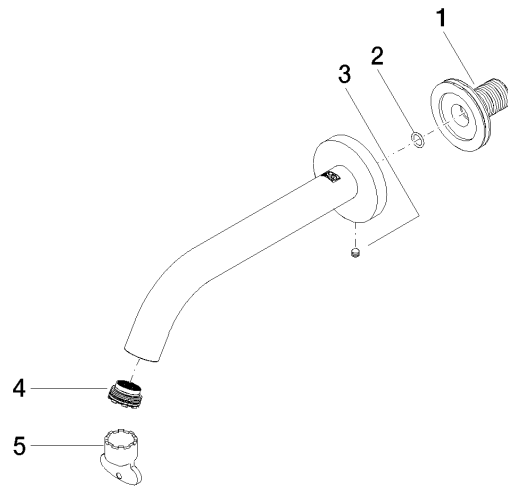
META Bath spout for wall mounting - Matte Black

META

13 801 660    Product version up to 5/27/2021

Certificates and sustainability

|            |           |        |             |
|------------|-----------|--------|-------------|
| IAPMO_4976 | WRAS_2001 | LGA_18 | WRAS_250402 |
|------------|-----------|--------|-------------|



## Spare parts list

| No. | Item Number        | Name    | Quantity used | Delivery time |
|-----|--------------------|---------|---------------|---------------|
| 1   | 90 24 03 280 00 90 | nipple  | 1.00          | 2             |
| 5   | 04 30 09 024 00 90 | key     | 1.00          | 2             |
| 4   | 09 29 03 055 90    | aerator | 1.00          | 60            |
| 2   | 90 14 10 060 00 90 | seal    | 1.00          | 2             |
| 3   | 90 31 11 112 00 90 | pin     | 1.00          | 2             |