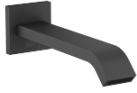






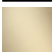


## IMO Bath spout for wall mounting - Matte Black

IMO

13 801 670



- 200mm projection
- rectangular normal flow
- hole diameter 37 mm
- 1/2" connection
- max. flow 25.1 l/min at 3 bar flow pressure
- WRAS

	Matte Black	13 801 670-33
	Chrome	13 801 670-00
	Brushed Platinum	13 801 670-06
	Dark Chrome	13 801 670-19
	Brushed Light Gold	13 801 670-27
	Brushed Chrome	13 801 670-93
	Brushed Dark Platinum	13 801 670-99

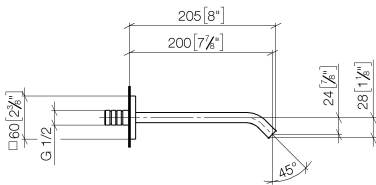
### Recommended miscellaneous



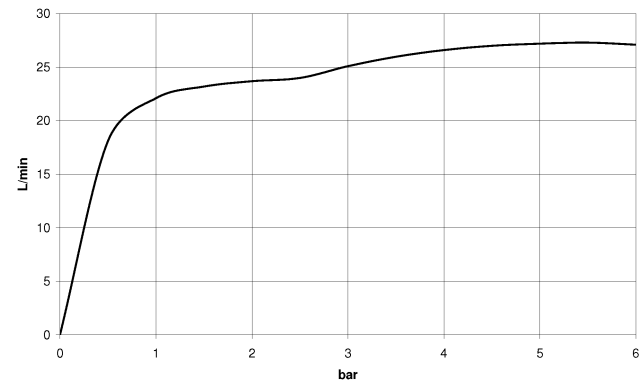
- Concealed wall elbow -** 35 085 970 90
- min. recess depth 90 mm
  - max. recess depth 163 mm

13 801 670

mm [inches]



Flow rate chart



Codes & Standards

ASME A112.18.1	cUPC	Scottish Water Byelaws	UK Water Supply Regulations
----------------	------	---------------------------	--------------------------------



## IMO Bath spout for wall mounting - Matte Black

---

IMO

13 801 670

### Certificates and sustainability

---

IAPMO\_4976

WRAS\_2005

