

13 801 809



- 200mm projection
- circular normal flow
- hole diameter 37 mm
- rosette Ø 60 mm
- 1/2" connection
- max. flow 21.5 l/min at 3 bar flow pressure
- WRAS 1801017

|   |                                     |               |
|---|-------------------------------------|---------------|
|  | Platinum                            | 13 801 809-08 |
|  | Chrome                              | 13 801 809-00 |
|  | Brushed Platinum                    | 13 801 809-06 |
|  | Dark Chrome                         | 13 801 809-19 |
|  | Brushed Durabronze<br>(23kt Gold)   | 13 801 809-28 |
|  | Brushed Bronze                      | 13 801 809-42 |
|  | Brushed<br>Champagne (22kt<br>Gold) | 13 801 809-46 |
|  | Champagne (22kt<br>Gold)            | 13 801 809-47 |
|  | Brushed Dark<br>Platinum            | 13 801 809-99 |

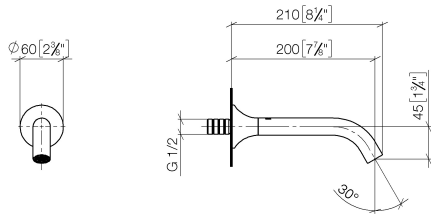
Recommended miscellaneous



- Concealed wall elbow -** 35 085 970 90
- max. recess depth 163 mm
  - min. recess depth 90 mm

13 801 809

mm [inches]



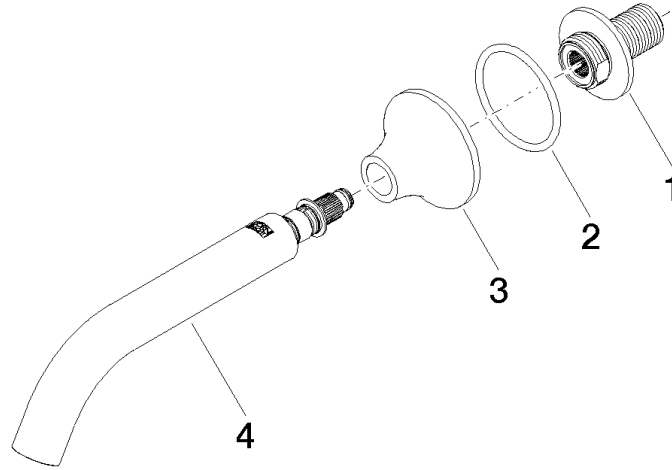
### Flow rate chart



### Certificates

WRAS\_2306002. LGA\_29290.

13 801 809



### Spare parts list

| No. | Item Number        | Name    | Quantity used | Delivery time |
|-----|--------------------|---------|---------------|---------------|
| 1   | 09 24 03 269 90    | nipple  | 1             | 2             |
| 2   | 09 14 10 084 90    | seal    | 1             | 2             |
| 3   | 09 27 80 014-08    | rosette | 1             | 40            |
| 4   | 90 28 22 315 00-08 | spout   | 1             | 40            |