

MADISON Three-hole basin mixer with pop-up waste - Durabrand (23kt Gold)





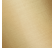

MADISON

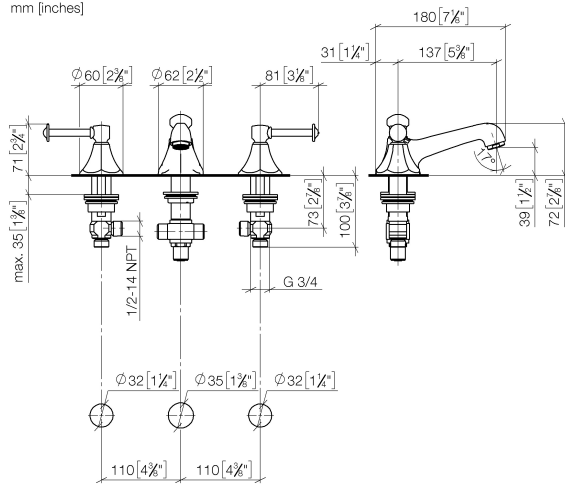
20 700 370 Product version from 7/31/2009



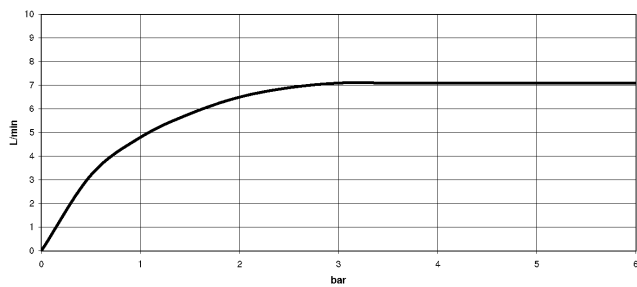
- 135mm projection
- fixed spout
- circular, air-enriched flow
- height of mixer 72 mm
- height up to aerator 40 mm
- hole diameter valve 32 mm
- hole diameter spout 35 mm
- without rosette
- 2x 1/2" x 1/2" high pressure hose
- max. flow 7 l/min
- lead-free
- This product can help a building meet the requirements of Green Building Rating Systems, e.g. LEED®, BREEAM®, DGNB
- WRAS

Only suitable for basins with an overflow.

| | | |
|---|-------------------------------|---------------|
|  | Durabrand (23kt Gold) | 20 700 370-09 |
|  | Chrome | 20 700 370-00 |
|  | Brushed Platinum | 20 700 370-06 |
|  | Platinum | 20 700 370-08 |
|  | Brushed Durabrand (23kt Gold) | 20 700 370-28 |
|  | Brushed Dark Platinum | 20 700 370-99 |



Flow rate chart



Codes & Standards

DIN 4109

Executive Order
no. 1007

ISO 3822

Scottish Water Byelaws

UK Water Supply Regulations

Ü-Zeichen



MADISON Three-hole basin mixer with pop-up waste - Durabrass (23kt Gold)

MADISON

20 700 370 Product version from 7/31/2009

Certificates and sustainability

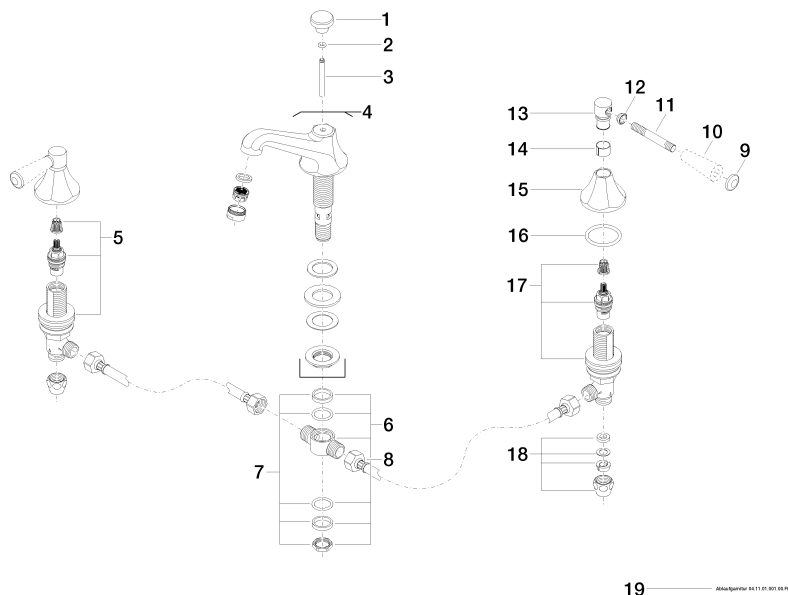
GDV_0400

LGA_8

WRAS_240602

20 700 370 Product version from 7/31/2009

Parts for other
finishes can be found
here: Chrome



Spare parts list

| No. | Item Number | Name | Quantity used | Delivery time |
|-----|-----------------------|---|---------------|---------------|
| | 7 90 23 10 012 00 90 | gasket kit | 1.00 | 2 |
| | 8 04 30 04 096 00 90 | hose | 2.00 | 2 |
| | 4 13 700 380-09 | spout | 1.00 | 40 |
| | 3 09 31 09 004-09 | pull-rod | 1.00 | 40 |
| | 13 09 20 82 000-09 | handle | 2.00 | 40 |
| | 1 09 20 36 030-09 | handle | 1.00 | 40 |
| | 10 11 170 370-09 | MADISON Lever insert - Durabronss (23kt Gold) | 2.00 | 40 |
| | 15 09 27 37 014-09 | rosette | 2.00 | 40 |
| | 5 90 17 11 040 51 90 | side panel | 1.00 | 2 |
| | 11 09 28 22 013 90 | pipe | 2.00 | 2 |
| | 17 90 17 11 040 50 90 | side panel | 1.00 | 2 |
| | 12 09 20 37 001-09 | handle | 2.00 | 40 |
| | 9 09 30 30 062-09 | screw | 2.00 | 40 |
| | 2 90 14 10 062 00 90 | seal | 1.00 | 2 |
| | 16 90 14 10 043 00 90 | seal | 2.00 | 2 |
| | 19 90 11 01 001 00-09 | pop-up waste | 1.00 | 40 |
| | 18 90 23 30 040 00-09 | threaded connector | 2.00 | 40 |
| | 6 90 17 11 020 10 90 | distributor | 1.00 | 2 |
| | 14 90 18 40 041 00 90 | sleeve | 2.00 | 2 |