

## LISSÉ Three-hole basin mixer with pop-up waste - Brushed Dark Platinum








LISSÉ

20 713 845 Product version from 3/9/2016



- 130mm projection
- fixed spout
- circular, air-enriched flow
- height of mixer 95 mm
- height up to aerator 75 mm
- hole diameter valve 32 mm
- hole diameter spout 35 mm
- rosette Ø 48 mm
- max. flow 5.7 l/min
- lead-free
- WRAS
- This product can help a building meet the requirements of Green Building Rating Systems, e.g. LEED®, BREEAM®, DGNB

Only suitable for basins with an overflow.

|   |                       |               |
|---|-----------------------|---------------|
|  | Brushed Dark Platinum | 20 713 845-99 |
|  | Chrome                | 20 713 845-00 |
|  | Brushed Platinum      | 20 713 845-06 |
|  | Dark Chrome           | 20 713 845-19 |
|  | Brushed Light Gold    | 20 713 845-27 |
|  | Matte Black           | 20 713 845-33 |
|  | Brushed Chrome        | 20 713 845-93 |

20 713 845 Product version from 3/9/2016



**Flow rate chart**



### Codes & Standards

DIN 4109

ISO 3822

Scottish Water  
Byelaws

UK Water Supply  
Regulations

Ü-Zeichen



## LISSE Three-hole basin mixer with pop-up waste - Brushed Dark Platinum

---

LISSE

20 713 845 Product version from 3/9/2016

Certificates and sustainability

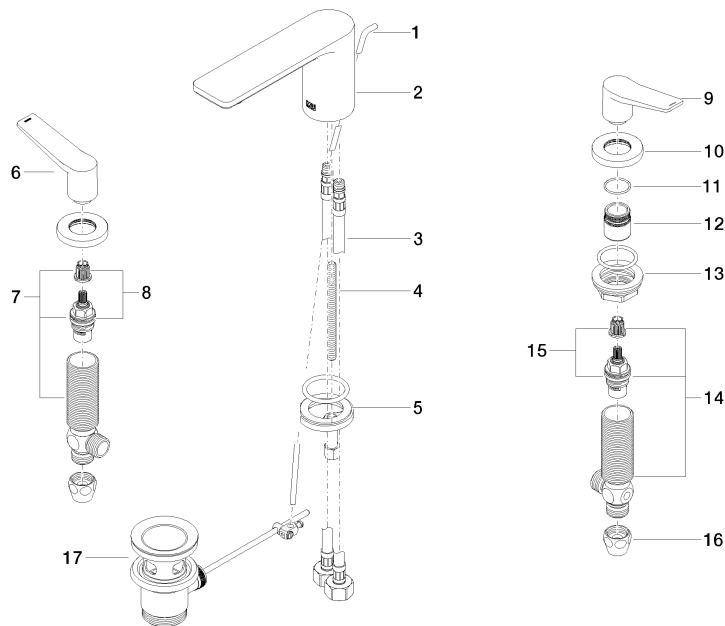
---

WRAS\_2210

LGA\_29

20 713 845 Product version from 3/9/2016

Parts for other  
finishes can be found  
here: [Chrome](#)



## Spare parts list

| No. | Item Number        | Name               | Quantity used | Delivery time |
|-----|--------------------|--------------------|---------------|---------------|
| 15  | 90 90 03 150 00 90 | top                | 1.00          | 2             |
| 13  | 04 23 10 032 78 90 | fixing set         | 2.00          | 2             |
| 17  | 90 11 01 001 00-99 | pop-up waste       | 1.00          | 20            |
| 5   | 04 30 11 038 75 90 | fixing set         | 1.00          | 2             |
| 2   | 90 11 84 013 00-99 | spout              | 1.00          | 20            |
| 1   | 09 31 09 120-99    | pull-rod           | 1.00          | 60            |
| 6   | 09 20 84 025-99    | handle ( hot )     | 1.00          | 60            |
| 12  | 09 18 40 206 90    | ring               | 2.00          | 2             |
| 16  | 90 23 30 040 00-99 | threaded connector | 2.00          | 20            |
| 10  | 09 27 84 023-99    | rosette            | 2.00          | 60            |
| 8   | 90 90 03 151 00 90 | top                | 1.00          | 2             |
| 11  | 09 14 10 098 90    | seal               | 2.00          | 2             |
| 14  | 04 17 11 055 50 90 | side panel         | 1.00          | 2             |
| 7   | 04 17 11 055 51 90 | side panel         | 1.00          | 2             |
| 3   | 04 30 04 019 00 90 | hose               | 2.00          | 2             |
| 9   | 09 20 84 024-99    | handle ( cold )    | 1.00          | 60            |
| 4   | 09 31 11 012 90    | pin                | 1.00          | 2             |