

TARA Three-hole basin mixer with pop-up waste - Brushed Dark Platinum

TARA

20 713 882 Product version from 6/30/2009 to 6/25/2021



- 165mm projection
- pivotable spout 360°
- circular, air-enriched flow
- height of mixer 285 mm
- height up to aerator 163 mm
- hole diameter valve 32 mm
- hole diameter spout 35 mm
- rosette Ø 55 mm
- 2x screw-in M 10 x 1 pressure hose, leak-tested
- max. flow 7 l/min
- lead-free
- WRAS
- This product can help a building meet the requirements of Green Building Rating Systems, e.g. LEED®, BREEAM®, DGNB

Only suitable for basins with an overflow.

| | | |
|---|--------------------------------|---------------|
|  | Brushed Dark Platinum | 20 713 882-99 |
|  | Chrome | 20 713 882-00 |
|  | Brushed Platinum | 20 713 882-06 |
|  | Platinum | 20 713 882-08 |
|  | Dark Chrome | 20 713 882-19 |
|  | Brushed Durabronze (23kt Gold) | 20 713 882-28 |
|  | Matte Black | 20 713 882-33 |
|  | Brushed Bronze | 20 713 882-42 |
|  | Brushed Champagne (22kt Gold) | 20 713 882-46 |
|  | Champagne (22kt Gold) | 20 713 882-47 |
|  | Brushed Chrome | 20 713 882-93 |

Recommended miscellaneous

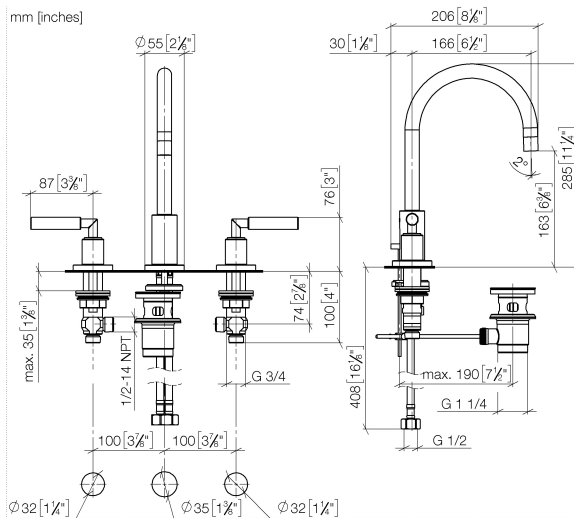


High pressure hoses -

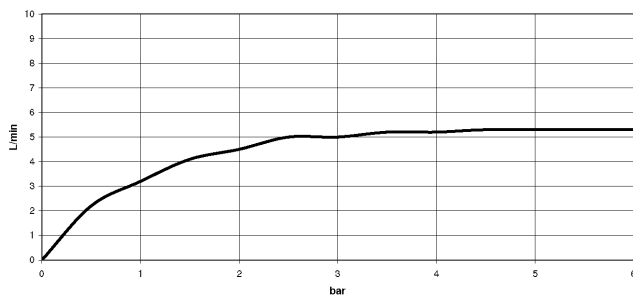
- 2x 3/8" x 1/2" x 500mm high pressure hose

12 506 970 90

20 713 882 Product version from 6/30/2009 to 6/25/2021



Flow rate chart



Codes & Standards

DIN 4109

EN 200

Executive Order
no. 1007

ISO 3822

Scottish Water
Byelaws

UK Water Supply
Regulations

Ü-Zeichen

VA-Zeichen

XP P 41-280



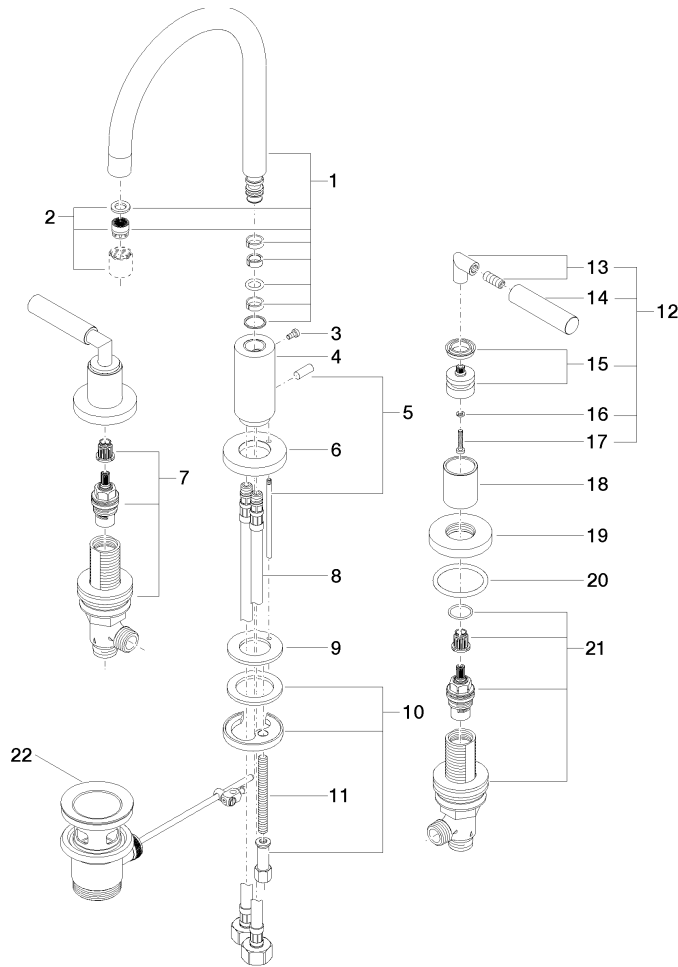
TARA Three-hole basin mixer with pop-up waste - Brushed Dark Platinum

TARA

20 713 882 Product version from 6/30/2009 to 6/25/2021

Certificates and sustainability

| | | | | |
|--------|--------|-----------|---------------|----------|
| LGA_18 | ETA_18 | WRAS_2212 | ACS_20 ACC LY | GDV_0400 |
|--------|--------|-----------|---------------|----------|





TARA Three-hole basin mixer with pop-up waste - Brushed Dark Platinum

TARA

20 713 882 Product version from 6/30/2009 to 6/25/2021

Spare parts list

| No. | Item Number | Name | Quantity used | Delivery time |
|-----|--------------------|--------------|---------------|---------------|
| 3 | 09 30 30 057 90 | screw | 1.00 | 2 |
| 15 | 90 12 12 007 00-99 | base | 2.00 | 20 |
| 6 | 09 28 10 133-99 | ring | 1.00 | 20 |
| 1 | 90 28 22 213 01-99 | spout | 1.00 | 20 |
| 2 | 90 23 01 028 03-99 | aerator | 1.00 | 20 |
| 14 | 09 20 88 052-99 | handle | 2.00 | 20 |
| 10 | 04 30 11 038 00 90 | fixing set | 1.00 | 2 |
| 9 | 09 14 05 047 90 | seal | 1.00 | 2 |
| 5 | 04 20 89 030 80-99 | pull-rod | 1.00 | 20 |
| 12 | 04 20 88 052 00-99 | handle | 2.00 | 20 |
| 19 | 09 27 89 105-99 | rosette | 2.00 | 20 |
| 4 | 09 11 10 087 10-99 | connection | 1.00 | 20 |
| 18 | 09 21 02 140-99 | sleeve | 2.00 | 20 |
| 11 | 09 31 11 011 90 | pin | 1.00 | 2 |
| 8 | 04 30 04 019 00 90 | hose | 2.00 | 2 |
| 13 | 04 18 20 022 00-99 | angle | 2.00 | 20 |
| 21 | 90 17 11 040 50 90 | side panel | 1.00 | 2 |
| 7 | 90 17 11 040 51 90 | side panel | 1.00 | 2 |
| 17 | 90 30 30 075 00 90 | screw | 2.00 | 2 |
| 16 | 90 30 11 029 00 90 | disc | 2.00 | 2 |
| 20 | 90 14 10 043 00 90 | seal | 2.00 | 2 |
| 22 | 90 11 01 001 00-99 | pop-up waste | 1.00 | 20 |