

MADISON Single-hole basin mixer with pop-up waste - Brushed Platinum








MADISON

22 500 360 Product version from 7/31/2009 to 9/7/2021



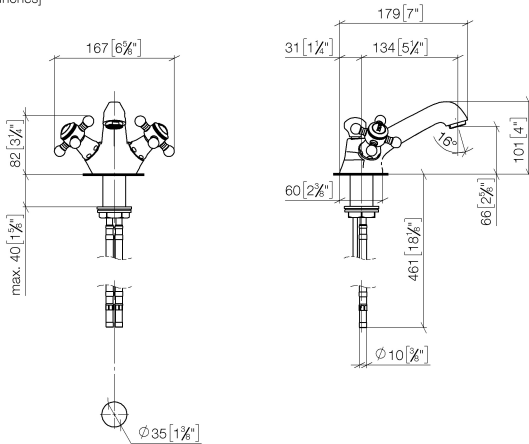
- 130mm projection
- fixed spout
- circular, air-enriched flow
- height of mixer 100 mm
- height up to aerator 65 mm
- hole diameter 35 mm
- 2x screw-in M 10 x 1 pressure hose, leak-tested
- max. flow 7 l/min
- lead-free
- This product can help a building meet the requirements of Green Building Rating Systems, e.g. LEED®, BREEAM®, DGNB
- WRAS

Only suitable for basins with an overflow.

| | | |
|---|-------------------------------|---------------|
|  | Brushed Platinum | 22 500 360-06 |
|  | Chrome | 22 500 360-00 |
|  | Platinum | 22 500 360-08 |
|  | Durabrand (23kt Gold) | 22 500 360-09 |
|  | Brushed Durabrand (23kt Gold) | 22 500 360-28 |
|  | Brushed Dark Brass | 22 500 360-39 |
|  | Brushed Dark Platinum | 22 500 360-99 |

22 500 360 Product version from 7/31/2009 to 9/7/2021

mm [inches]



Flow rate chart



Codes & Standards

DIN 4109

EN 200

ISO 3822

Scottish Water
Byelaws

UK Water Supply
Regulations

Ü-Zeichen

VA-Zeichen



MADISON Single-hole basin mixer with pop-up waste - Brushed Platinum

MADISON

22 500 360 Product version from 7/31/2009 to 9/7/2021

Certificates and sustainability

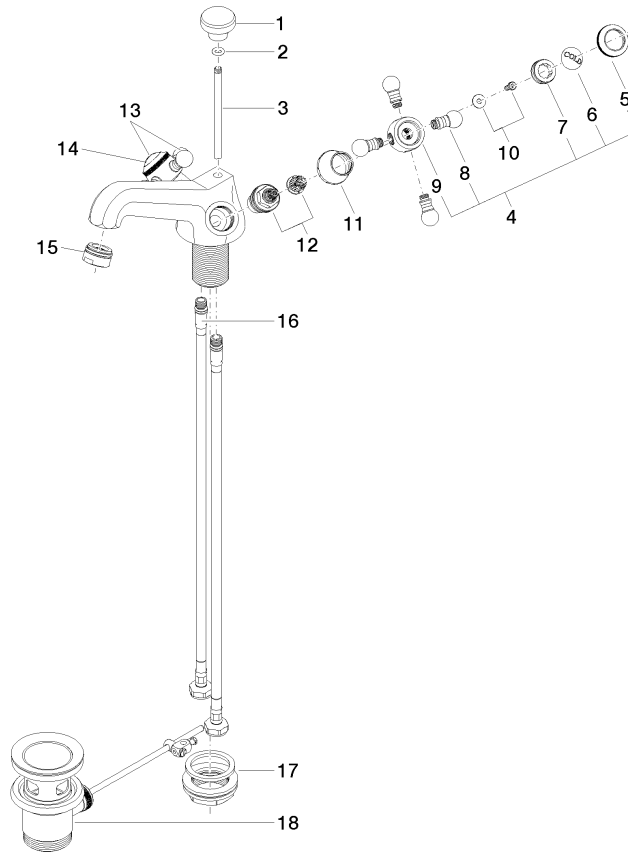
WRAS_2107

LGA_8

ETA_17

22 500 360 Product version from 7/31/2009 to 9/7/2021

Parts for other
finishes can be found
here: [Chrome](#)



Spare parts list

| No. | Item Number | Name | Quantity used | Delivery time |
|-----|--------------------|-----------------|---------------|---------------|
| 1 | 09 20 36 030-06 | handle | 1.00 | 10 |
| 13 | 04 20 36 002 07-06 | handle (hot) | 1.00 | 10 |
| 11 | 09 21 02 055-06 | cover | 2.00 | 10 |
| 14 | 09 26 01 011 90 | accessories | 1.00 | 2 |
| 6 | 09 26 01 010 90 | accessories | 1.00 | 2 |
| 10 | 04 30 30 029 00 90 | fixing set | 2.00 | 2 |
| 5 | 09 20 36 005-06 | handle | 2.00 | 10 |
| 16 | 04 30 04 104 00 90 | hose | 2.00 | 2 |
| 8 | 09 20 36 004-06 | handle | 8.00 | 10 |
| 7 | 09 20 83 006 90 | handle | 2.00 | 2 |
| 4 | 04 20 36 002 06-06 | handle (cold) | 1.00 | 10 |
| 12 | 90 90 03 151 00 90 | top | 2.00 | 2 |
| 9 | 09 20 36 002-06 | handle | 2.00 | 10 |
| 15 | 90 23 01 118 01-06 | aerator | 1.00 | 10 |
| 17 | 04 23 10 009 01 90 | fixing set | 1.00 | 2 |
| 3 | 09 31 09 004-06 | pull-rod | 1.00 | 10 |
| 2 | 90 14 10 062 00 90 | seal | 1.00 | 2 |
| 18 | 90 11 01 001 00-06 | pop-up waste | 1.00 | 10 |