

MADISON Bath mixer for wall mounting with hand shower set - Brushed Durabron (23kt Gold)



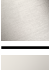



MADISON

25 023 360



- 160mm projection
- Hand shower: COMPACT RAIN, max. flow rate 9 l/min (at 3 bar)
- spout: rectangular normal flow
- wall bracket
- rotary diverter for bath/shower
- rosette Ø 70 mm
- 1/2" connection
- gauge 153 mm
- metal shower hose 1250mm with integrated anti-twist protection
- max. spout flow rate 26 l/min
- WRAS 1512014

Intrinsic protection against back flow.

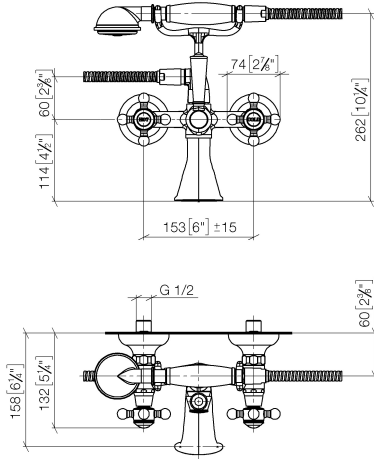
	Brushed Durabron (23kt Gold)	25 023 360-28
	Chrome	25 023 360-00
	Brushed Platinum	25 023 360-06
	Platinum	25 023 360-08
	Durabron (23kt Gold)	25 023 360-09
	Brushed Dark Platinum	25 023 360-99



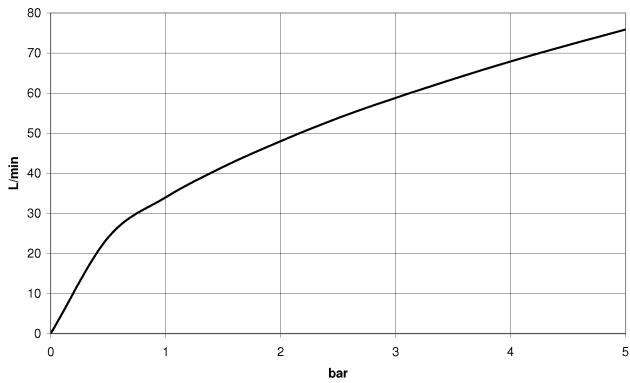
MADISON Bath mixer for wall mounting with hand shower set - Brushed Durabronz (23kt Gold)

MADISON

25 023 360
mm [inches]



Flow rate chart



Codes & Standards

EN 1717

Scottish Water
Byelaws

UK Water Supply
Regulations



MADISON Bath mixer for wall mounting with hand shower set - Brushed
Durabronz (23kt Gold)

MADISON

25 023 360

Certificates

Belgaqua_21-378-2 WRAS_1512

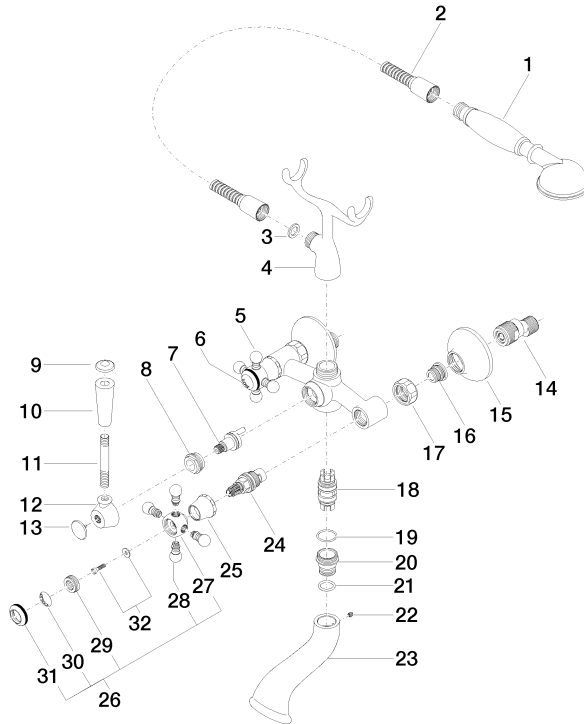


MADISON Bath mixer for wall mounting with hand shower set - Brushed Durabronz (23kt Gold)

MADISON

25 023 360

Parts for other finishes can be found here: [Chrome](#)





MADISON Bath mixer for wall mounting with hand shower set - Brushed Durabross (23kt Gold)

MADISON

25 023 360

Spare parts list

No.	Item Number	Name	Quantity used	Delivery time
	28 002 970-28	MADISON Metal hand shower with porcelain insert (white) - Brushed Durabross (23kt Gold)	49	20