

VAIA Single-lever bath mixer with stand pipe for free-standing assembly with hand shower set - Brushed Platinum

VAIA

25 863 809 Product version from 4/1/2025



- spout: circular, air-enriched flow
- max. flow 24.6 l/min at 3 bar flow pressure
- Hand shower: COMPACT RAIN, max. flow rate 6.8 l/min (at 3 bar)
- bar-type hand shower with anti-scale system
- 286mm projection
- pivotable spout 360°
- automatic bath/shower diverter
- total height 1057 - 1127 mm
- wall bracket
- stand pipe height 565 - 635 mm
- height up to aerator 925 – 995 mm
- slide-on rosettes Ø 135 mm
- metal shower hose 1250mm with integrated anti-twist protection
- WRAS

Intrinsic protection against back flow.

Intrinsic protection against back flow.

	Brushed Platinum	25 863 809-06
	Chrome	25 863 809-00
	Platinum	25 863 809-08
	Dark Chrome	25 863 809-19
	Brushed Durabrass (23kt Gold)	25 863 809-28
	Brushed Dark Brass	25 863 809-39
	Brushed Bronze	25 863 809-42
	Brushed Champagne (22kt Gold)	25 863 809-46
	Champagne (22kt Gold)	25 863 809-47
	Brushed Dark Platinum	25 863 809-99

Required miscellaneous



Concealed floor mounting -

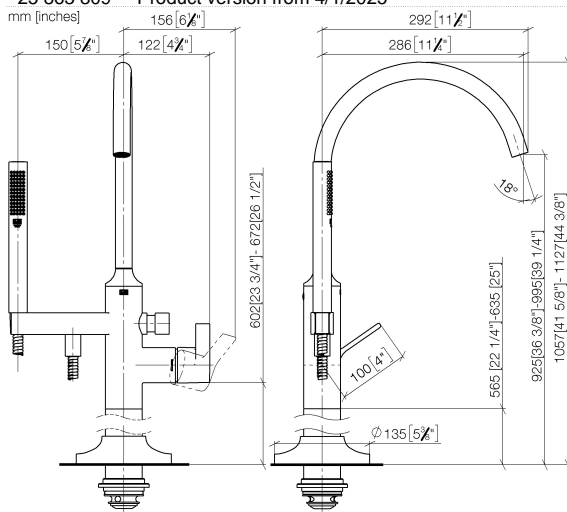
35 945 970 90

- max. recess depth 150 mm
- min. recess depth 80 mm

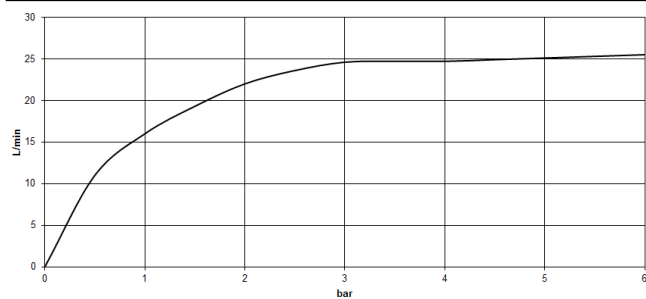
VAIA Single-lever bath mixer with stand pipe for free-standing assembly with hand shower set - Brushed Platinum

VAIA

25 863 809 Product version from 4/1/2025



Flow rate chart



Codes & Standards

ASME A112.18.1	cUPC	DIN 4109	EN 1717
ISO 3822	Scottish Water Byelaws	UK Water Supply Regulations	Ü-Zeichen



VAIA Single-lever bath mixer with stand pipe for free-standing assembly with
hand shower set - Brushed Platinum

VAIA

25 863 809 Product version from 4/1/2025

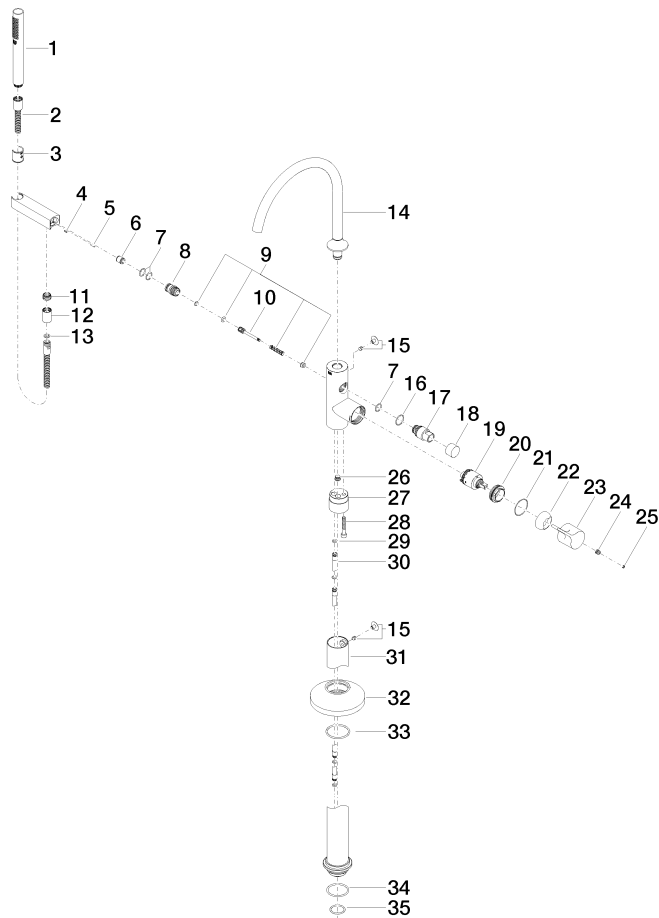
Certificates and sustainability

IAPMO_4976	Belgaqua_19_77	LGA_29	Belgaqua_24-003-2	WRAS_250502
------------	----------------	--------	-------------------	-------------

VAIA Single-lever bath mixer with stand pipe for free-standing assembly with hand shower set - Brushed Platinum

VAIA

25 863 809 Product version from 4/1/2025



VAIA Single-lever bath mixer with stand pipe for free-standing assembly with hand shower set - Brushed Platinum

VAIA

25 863 809 Product version from 4/1/2025

Spare parts list

No.	Item Number	Name	Quantity used	Delivery time
31	04 28 22 030 00-06	pipe	1.00	10
5	09 31 11 040 90	pin	1.00	2
19	90 15 05 039 00 90	cartridge	1.00	2
17	09 21 34 081 20-06	nipple	1.00	10
34	09 14 10 084 90	seal	1.00	2
25	90 31 20 087 00-06	plug	1.00	10
23	09 20 80 022-06	handle	1.00	60
11	09 24 03 069 90	nipple	1.00	2
8	09 24 03 153 20-06	nipple	1.00	60
2	90 30 02 072 00-06	Metal shower hose 1/2" x 3/8" x 1250 mm - Brushed Platinum	1.00	10
9	90 16 02 023 00 90	spring	1.00	2
27	09 24 03 152 20-06	adaptor	1.00	-
Spare part can no longer be ordered, please order the replacement item				
14	90 28 22 327 00-06	spout	1.00	10
30	04 28 22 025 00 90	connection	2.00	2
10	09 31 09 102 20-06	pull-rod	1.00	-
Spare part can no longer be ordered, please order the replacement item				
3	09 18 40 118 90	sleeve	1.00	2
21	09 14 10 037 90	seal	1.00	2
18	09 20 88 002-06	handle	1.00	10
35	09 14 10 018 90	seal	1.00	2
20	09 24 04 298 90	nut	1.00	2
28	09 30 30 111 90	screw	1.00	2
29	09 14 10 139 90	seal	2.00	2
4	09 31 11 058 90	pin	1.00	2
32	09 27 80 022-06	rosette	1.00	10
16	09 14 10 112 90	seal	1.00	2
22	09 28 30 036-06	cover	1.00	10
15	04 31 20 036 00 90	plug	2.00	2
6	90 23 01 141 00 90	back-flow preventer	1.00	2
33	90 14 10 129 00 90	seal	1.00	2
12	90 21 02 069 00-06	cover	1.00	10
13	90 14 20 026 00 90	seal	1.00	2
26	04 31 20 039 11 90	plug	1.00	2
7	90 14 10 010 00 90	seal	3.00	2
24	90 31 11 030 00 90	pin	1.00	2
1	90 12 11 140 41-06	shower	1.00	10