

TARA Shower mixer for wall mounting without hand shower - Platinum

TARA




26 100 892

Product version from 4/1/2024

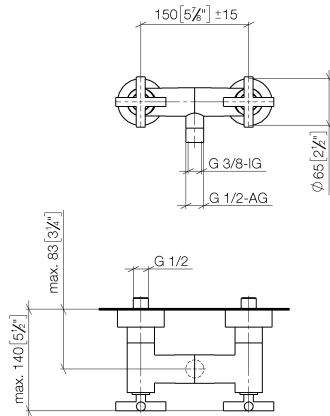


- female 3/8" or male thread 1/2" shower outlet
- slide-on rosettes Ø 65 mm
- 1/2" connection
- gauge 150 mm - 15 mm

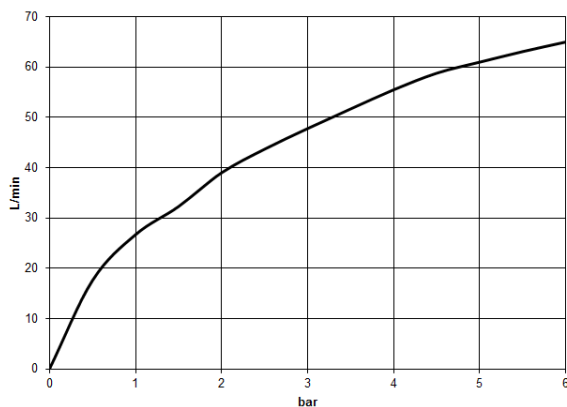
Intrinsic protection against back flow.

| | | |
|-----------------------------------------------------------------------------------|--------------------|---------------|
|  | Platinum | 26 100 892-08 |
|  | Light Gold | 26 100 892-26 |
|  | Brushed Light Gold | 26 100 892-27 |

mm [inches]



Flow rate chart



Codes & Standards

DIN 4109

EN 1717

ISO 3822

Ü-Zeichen



TARA Shower mixer for wall mounting without hand shower - Platinum

TARA

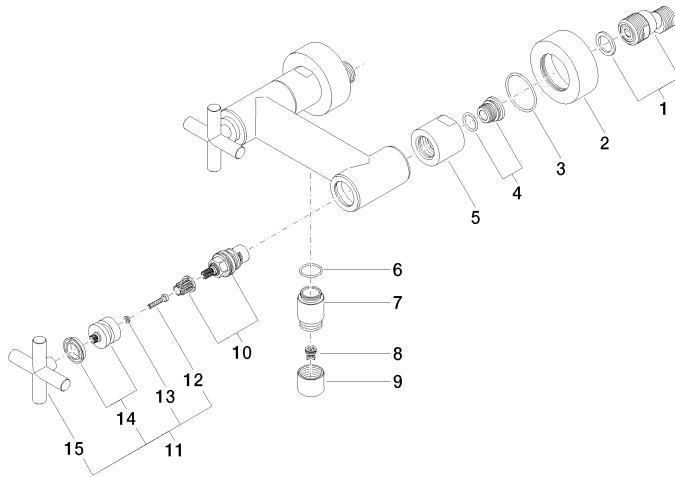
26 100 892 Product version from 4/1/2024

Certificates and sustainability

LGA_18

Belgaqua_21-033-2

Parts for other
finishes can be found
here: [Light Gold](#)



Spare parts list

| No. | Item Number | Name | Quantity used | Delivery time |
|-----|-----------------------|---------------------|---------------|---------------|
| | 5 09 23 10 064-08 | nut | 2.00 | 40 |
| | 9 09 21 02 143-08 | sleeve | 1.00 | 40 |
| | 8 09 23 01 131 90 | back-flow preventer | 1.00 | 2 |
| | 4 04 29 05 014 00 90 | nipple | 2.00 | 2 |
| | 3 09 14 10 034 90 | seal | 2.00 | 2 |
| | 7 09 24 03 121-08 | nipple | 1.00 | 40 |
| | 2 09 27 89 103-08 | rosette | 2.00 | 40 |
| | 15 09 20 89 010-08 | handle | 2.00 | 60 |
| | 14 90 12 12 007 00-08 | base | 2.00 | 40 |
| | 1 04 11 04 030 00 90 | connection | 2.00 | 2 |
| | 10 90 90 03 131 00 90 | top | 2.00 | 2 |
| | 6 90 14 10 032 00 90 | seal | 1.00 | 2 |
| | 13 90 30 11 029 00 90 | disc | 2.00 | 2 |
| | 12 90 30 30 075 00 90 | screw | 2.00 | 2 |
| | 11 90 20 89 010 10-08 | handle | 2.00 | 40 |