

Hand shower set for bath rim or tile edge installation - Brushed Dark Brass SERIES SPECIFIC

27 702 980 Product version from 5/15/2020



- COMPACT RAIN, max. flow rate 6.8 l/min (at 3 bar)
- with anti-scale system
- rosette 60 x 60 mm
- hole diameter 32 mm
- metal shower hose 1750mm with integrated anti-twist protection
- WRAS

Two-piece design allows hose to later be changed without dismantling the fitting.
Intrinsic protection against back flow.

| | | |
|---|--------------------------------|---------------|
|  | Brushed Dark Brass | 27 702 980-39 |
|  | Chrome | 27 702 980-00 |
|  | Brushed Platinum | 27 702 980-06 |
|  | Platinum | 27 702 980-08 |
|  | Dark Chrome | 27 702 980-19 |
|  | Brushed Light Gold | 27 702 980-27 |
|  | Brushed Durabronze (23kt Gold) | 27 702 980-28 |
|  | Matte Black | 27 702 980-33 |
|  | Brushed Champagne (22kt Gold) | 27 702 980-46 |
|  | Champagne (22kt Gold) | 27 702 980-47 |
|  | Brushed Chrome | 27 702 980-93 |
|  | Brushed Dark Platinum | 27 702 980-99 |



Flow rate chart



Codes & Standards

DIN 4109

ISO 3822

Scottish Water
Byelaws

UK Water Supply
Regulations

Ü-Zeichen



Hand shower set for bath rim or tile edge installation - Brushed Dark Brass

SERIES SPECIFIC

27 702 980 Product version from 5/15/2020

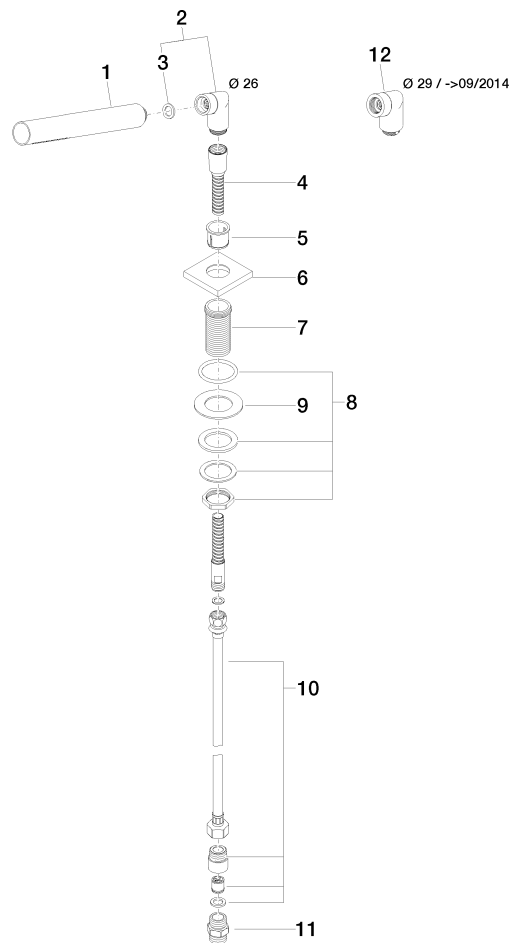
Certificates and sustainability

LGA_29

WRAS_2209

27 702 980 Product version from 5/15/2020

Parts for other
finishes can be found
here: [Chrome](#)



Spare parts list

| No. | Item Number | Name | Quantity used | Delivery time |
|--|--------------------|--|---------------|---------------|
| 5 | 90 18 40 085 00 90 | sleeve | 1.00 | 2 |
| 11 | 90 24 03 168 00 90 | nipple | 1.00 | 2 |
| 1 | 90 12 11 140 41-39 | shower | 1.00 | 30 |
| 7 | 09 30 01 090-07 | sleeve | 1.00 | 30 |
| 3 | 90 14 20 002 00 90 | seal | 1.00 | 2 |
| 2 | 04 24 04 287 00-39 | nipple | 1.00 | 60 |
| 10 | 12 505 970 90 | High pressure hose 1/2" x 3/8" x 500 mm - | 1.00 | 2 |
| 4 | 28 322 970-39 | Metal shower hose 1/2" x 3/8" x 1750 mm - Brushed Dark Brass | 1.00 | 30 |
| 8 | 04 23 10 032 46 90 | fixing set | 1.00 | 2 |
| 9 | 09 30 11 060 90 | disc | 1.00 | 2 |
| 6 | 09 27 68 003-39 | rosette | 1.00 | - |
| Spare part can no longer be ordered, please order the replacement item | | | | |
| 12 | 04 24 04 187 00-39 | nipple | 1.00 | - |
| Spare part can no longer be ordered, please order the replacement item | | | | |