

Hand shower set with cover plate FlowReduce - Brushed Platinum

SERIES SPECIFIC

27 818 980 Product version up to 7/19/2018



- COMPACT RAIN, max. flow rate 6.8 l/min (at 3 bar)
- metal shower hose 1250mm with integrated anti-twist protection
- 3/8" shower outlet
- with anti-scale system

Technical dimensions:

- cover plate 240 x 60 mm
- 1/2" wall elbow

Notes:

- WRAS

Intrinsic protection against back flow.

	Brushed Platinum	27 818 980-06 0010
	Chrome	27 818 980-00
	Chrome	27 818 980-00 0010
	Brushed Platinum	27 818 980-06
	Platinum	27 818 980-08
	Platinum	27 818 980-08 0010
	Dark Chrome	27 818 980-19
	Dark Chrome	27 818 980-19 0010
	Brushed Light Gold	27 818 980-27
	Brushed Durabass (23kt Gold)	27 818 980-28 0010
	Brushed Durabass (23kt Gold)	27 818 980-28
	Matte Black	27 818 980-33
	Matte Black	27 818 980-33 0010
	Brushed Champagne (22kt Gold)	27 818 980-46 0010
	Brushed Champagne (22kt Gold)	27 818 980-46
	Champagne (22kt Gold)	27 818 980-47 0010
	Champagne (22kt Gold)	27 818 980-47
	Brushed Chrome	27 818 980-93 0010
	Brushed Chrome	27 818 980-93
	Brushed Dark Platinum	27 818 980-99
	Brushed Dark Platinum	27 818 980-99 0010

27 818 980 Product version up to 7/19/2018

Recommended miscellaneous



Concealed wall elbow -

- max. recess depth 163 mm
- min. recess depth 90 mm

35 085 970 90

27 818 980 Product version up to 7/19/2018

mm [inches]



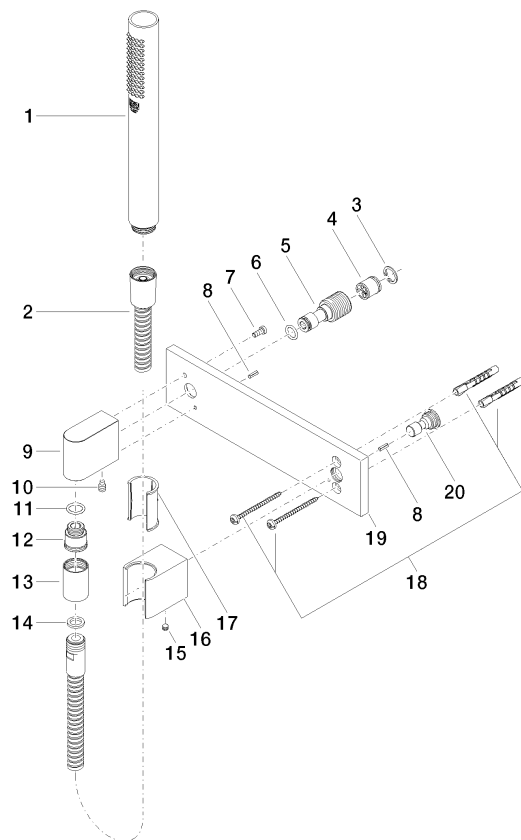
Codes & Standards

ASME A112.18.1	cUPC	DIN 4109	ISO 3822
----------------	------	----------	----------

Ü-Zeichen

Certificates and sustainability

LGA_29	IAPMO_4976
--------	------------



Spare parts list

No.	Item Number	Name	Quantity used	Delivery time
	8 09 31 11 026 90	pin	2.00	2
	3 09 16 01 014 90	ring	1.00	2
	6 09 14 10 008 90	seal	1.00	2
	2 90 30 02 072 00-06	Metal shower hose 1/2" x 3/8" x 1250 mm - Brushed Platinum	1.00	10
	19 09 11 02 120-06	plate	1.00	10
	5 09 24 03 116 20 90	nipple	1.00	2
	17 09 18 40 078 90	sleeve	1.00	2
	16 09 17 20 035-06	holder	1.00	60
	20 09 24 03 073 90	nipple	1.00	2
	18 05 30 31 025 00 90	fixing set	1.00	2
	4 90 23 01 040 00 90	back-flow preventer	1.00	2
	9 09 11 03 026 20-06	connection	1.00	60
	12 09 24 03 107 20 90	nipple	1.00	2
	10 04 31 11 140 00 90	pin	1.00	2
	7 09 30 30 054 90	screw	1.00	2
	13 90 21 02 069 00-06	cover	1.00	10
	14 90 14 20 026 00 90	seal	1.00	2
	11 90 14 10 077 00 90	seal	1.00	2
	15 90 31 11 112 00 90	pin	1.00	2
	1 90 12 11 140 41-06	shower	1.00	10