

LULU Wall elbow - Chrome

LULU



28 450 710

Product version up to 7/6/2018



- 3/8" shower outlet
- rosette 78 x 55 mm
- 1/2" connection
- WRAS

Intrinsic protection against back flow.

| | | |
|---|------------------|---------------|
|  | Chrome | 28 450 710-00 |
|  | Brushed Platinum | 28 450 710-06 |

Recommended miscellaneous



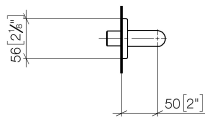
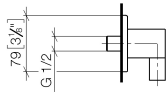
- Concealed wall elbow -

•max. recess depth 163 mm

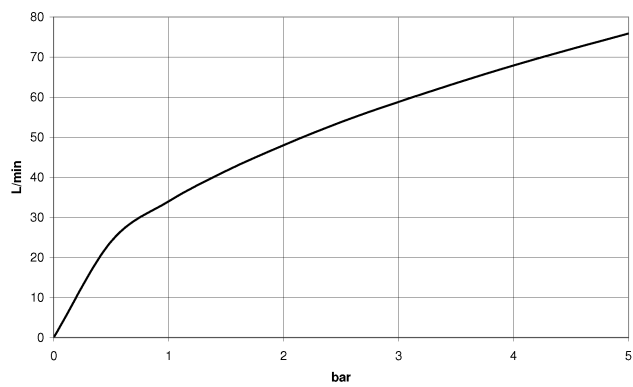
•min. recess depth 90 mm

35 085 970 90

mm [inches]



Flow rate chart



Codes & Standards

ASME A112.18.1

cUPC

EN 1717

Scottish Water
Byelaws

UK Water Supply
Regulations



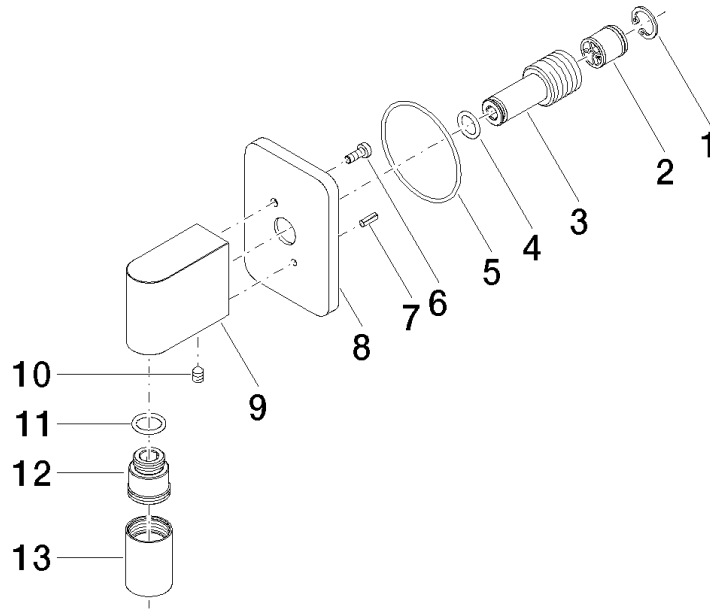
LULU Wall elbow - Chrome

LULU

28 450 710 Product version up to 7/6/2018

Certificates and sustainability

Belgaqua_21-381-2 WRAS_2310 WRAS_1807 IAPMO_4976



Spare parts list

| No. | Item Number | Name | Quantity used | Delivery time |
|-----|--------------------|---------------------|---------------|---------------|
| 7 | 09 31 11 026 90 | pin | 1.00 | 2 |
| 9 | 09 11 03 026 20-00 | connection | 1.00 | 60 |
| 6 | 09 30 30 054 90 | screw | 1.00 | 2 |
| 10 | 09 31 11 005 90 | pin | 1.00 | 2 |
| 3 | 09 24 03 116 20 90 | nipple | 1.00 | 2 |
| 4 | 09 14 10 008 90 | seal | 1.00 | 2 |
| 12 | 09 24 03 107 20 90 | nipple | 1.00 | 2 |
| 5 | 09 14 10 142 90 | seal | 1.00 | 2 |
| 1 | 09 16 01 014 90 | ring | 1.00 | 2 |
| 8 | 09 27 71 002-00 | rosette | 1.00 | 10 |
| 2 | 90 23 01 040 00 90 | back-flow preventer | 1.00 | 2 |
| 11 | 90 14 10 077 00 90 | seal | 1.00 | 2 |
| 13 | 90 21 02 069 00-00 | cover | 1.00 | 10 |