

Shower head - Brushed Dark Brass

SERIES SPECIFIC

28 504 670 Product version from 6/30/2015



- spray head Ø 100mm
- PURIFY RAIN, max. flow rate 7 l/min (at 3 bar)
- Function from: 6 l/min
- with anti-scale system

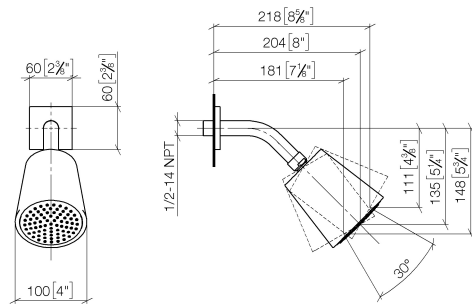
Technical data:

- 180-210mm projection
- ball-joint pivotable through 30°
- rosette 60 x 60 mm
- 1/2" connection

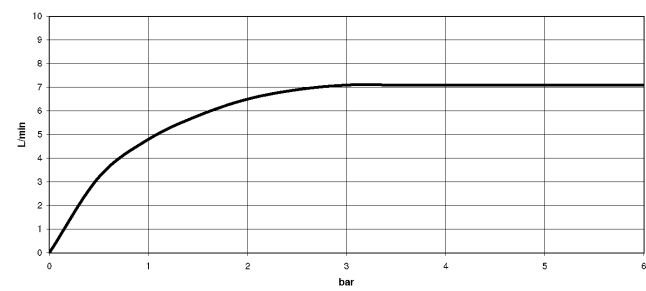
	Brushed Dark Brass	28 504 670-39
	Chrome	28 504 670-00
	Brushed Platinum	28 504 670-06
	Platinum	28 504 670-08
	Dark Chrome	28 504 670-19
	Brushed Light Gold	28 504 670-27
	Brushed Durabrass (23kt Gold)	28 504 670-28
	Matte Black	28 504 670-33
	Brushed Champagne (22kt Gold)	28 504 670-46
	Champagne (22kt Gold)	28 504 670-47
	Brushed Chrome	28 504 670-93
	Brushed Dark Platinum	28 504 670-99

28 504 670 Product version from 6/30/2015

mm [inches]



Flow rate chart



Codes & Standards

DIN 4109

ISO 3822

Ü-Zeichen



Shower head - Brushed Dark Brass

SERIES SPECIFIC

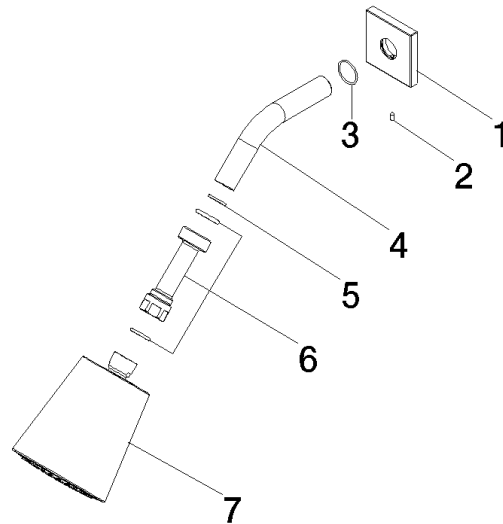
28 504 670 Product version from 6/30/2015

Certificates and sustainability

LGA_19

28 504 670 Product version from 6/30/2015

Parts for other
finishes can be found
here: [Chrome](#)



Spare parts list

No.	Item Number	Name	Quantity used	Delivery time
	5 90 14 20 002 00 90	seal	1.00	2
	3 90 14 10 026 00 90	seal	1.00	2
	1 09 27 98 003-39	rosette	1.00	-
Spare part can no longer be ordered, please order the replacement item				
	7 90 12 05 054 01-39	shower	1.00	-
Spare part can no longer be ordered, please order the replacement item				
	6 90 24 05 017 00 90	nipple	1.00	2
	2 09 31 11 048 90	pin	1.00	2
	4 09 11 03 011-39	connection	1.00	60